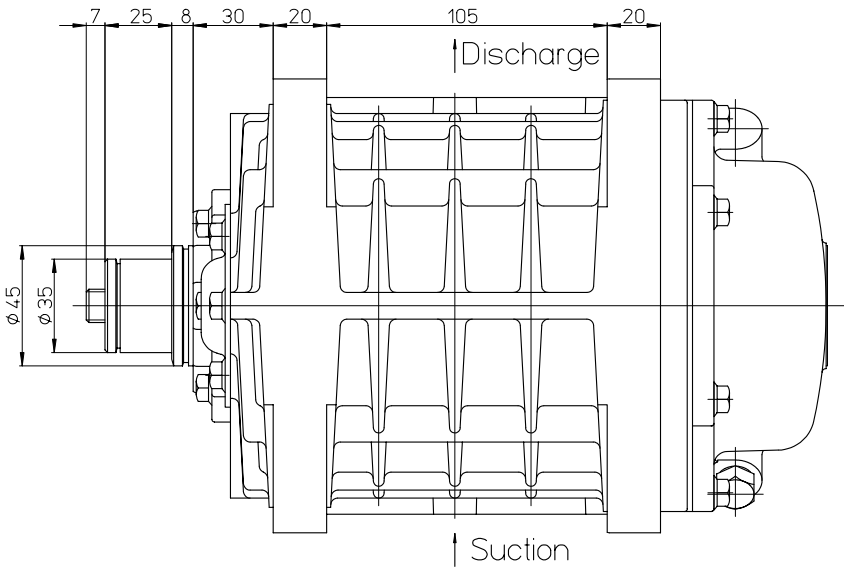
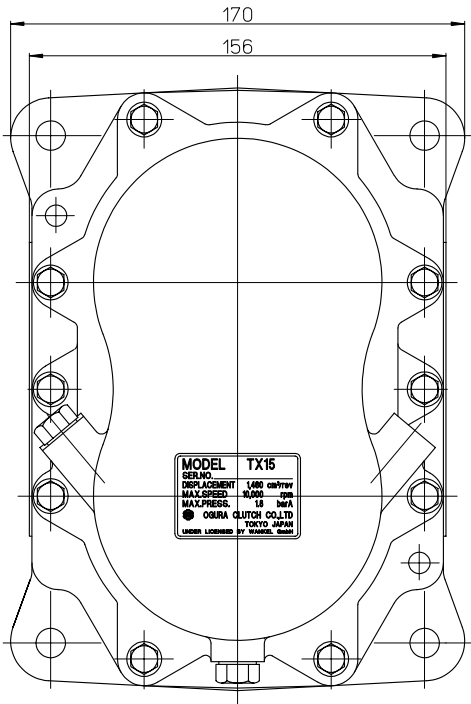
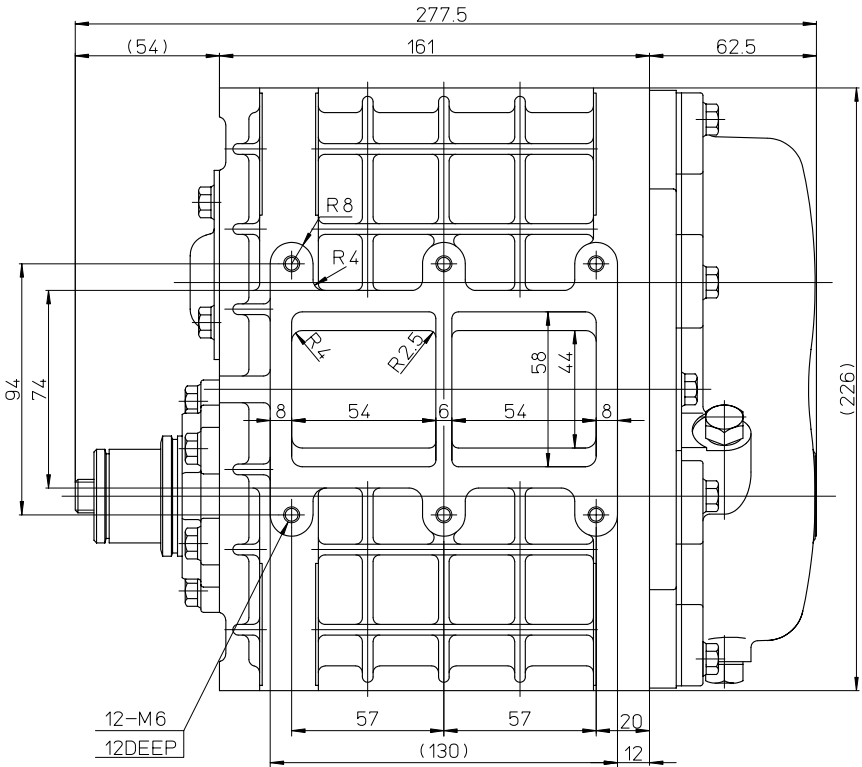
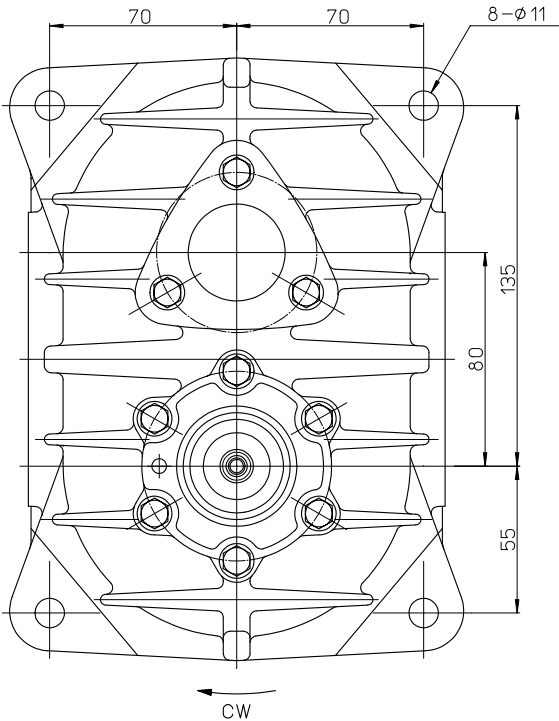


CONFIDENTIAL
THE DRAWINGS AND TECHNICAL INFORMATION
INCLUDED HEREIN ARE THE PROPERTY OF OGURA
INDUSTRIAL CORP AND CAN NOT BE DUPLICATED
WITHOUT WRITTEN APPROVAL FROM OIC.

REV	REVISION RECORD	NOTE
△	Casing was changed. O-ring and gasket were changed to liquid gasket.	Next manufacturing

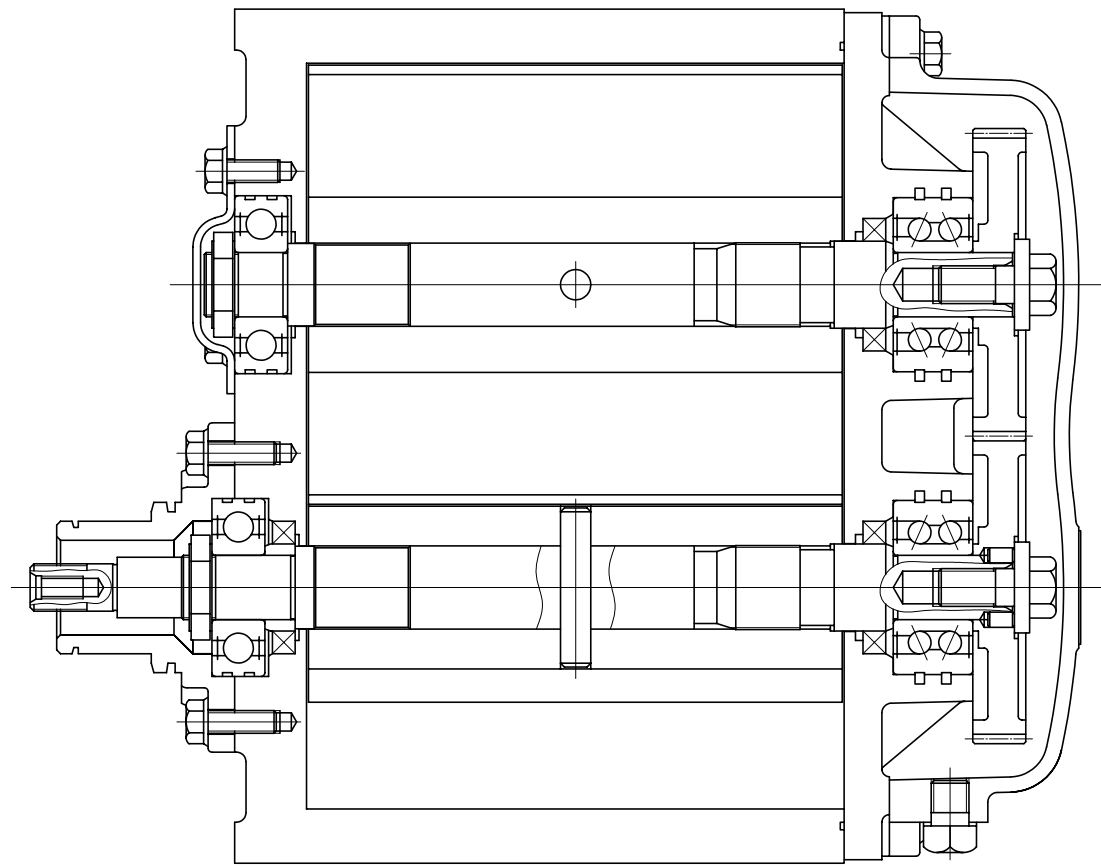
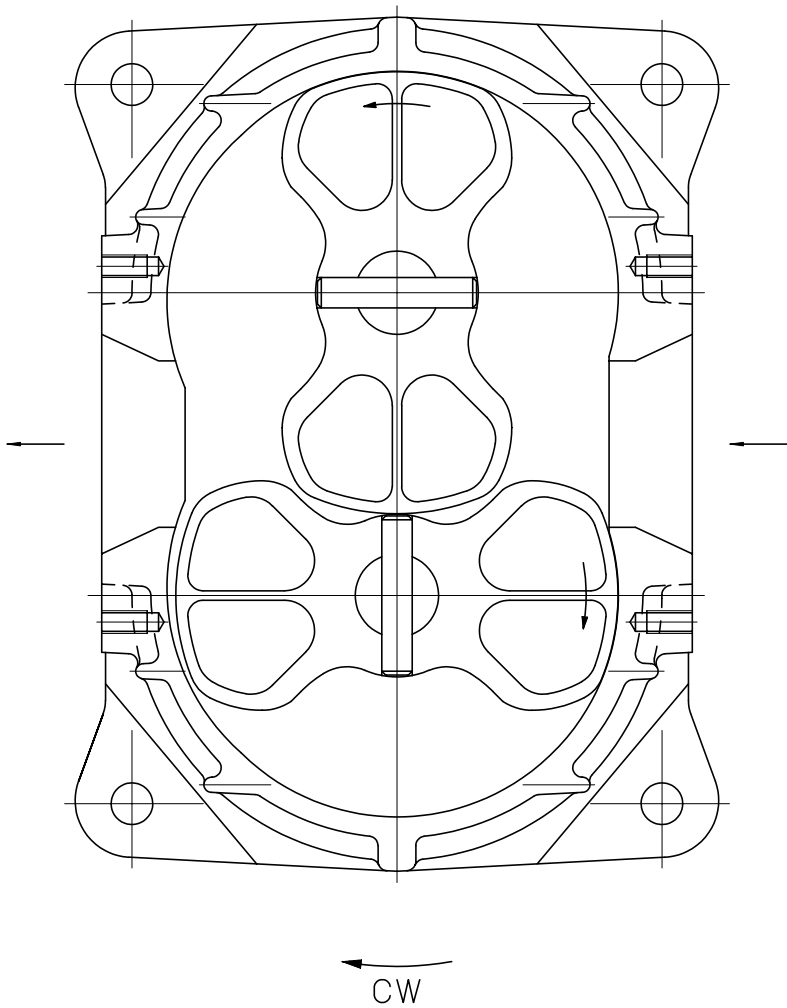


Specifications
Displacement 1,460 cm³/rev
Max. R.P.M. 10,000 rpm
Max. Press. Ratio 1.8
Weight 10.8 kg
Oil Amount 70 cc



HISTORY	APP.	DATE 10/4/09/21	SIZE A1	CUSTOMER
DRW	DATE	SCALE 1/1	MODEL TX15	
Redrawn	DRW S.FUSEJIMA	DATE 10/4/09/21	ASSY NO	
DWN	R.NOGAMI	DATE 10/4/09/21		
ISSUE NO	PLANT	PARTS CODE 6113011502	NAME S/C Assy	DIMENSION mm
ISSUE DATE		OGURA CLUTCH Co.,LTD	DRW NO 61100005	SHT 1/2

CONFIDENTIAL
THE DRAWINGS AND TECHNICAL INFORMATION
INCLUDED HEREIN ARE THE PROPERTY OF OGURA
INDUSTRIAL CORP AND CAN NOT BE DUPLICATED
WITHOUT WRITTEN APPROVAL FROM OIC.



REV	REVISION RECORD	NOTE
△	Casing was changed. O-ring and gasket were changed to liquid gasket.	Next manufacturing

HISTORY	APPD <i>T. Nakagawa</i>	DATE 1994/09/21	SIZE A2	CUSTOMER	
	CHKD	DATE	SCALE	MODEL TX15	
	CHKD S.FUSEJIMA	DATE 1994/09/21	1/1	ASSY NO	
	DWN R.NO GAMI	DATE 1994/09/21			
ISSUE NO	PLANT	PARTS CODE	6113011502	NAME S/C Assy	DIMENSION (mm)
ISSUE DATE	OGURA CLUTCH Co.,LTD.		DWG NO 611000005	△	SHT 2/2

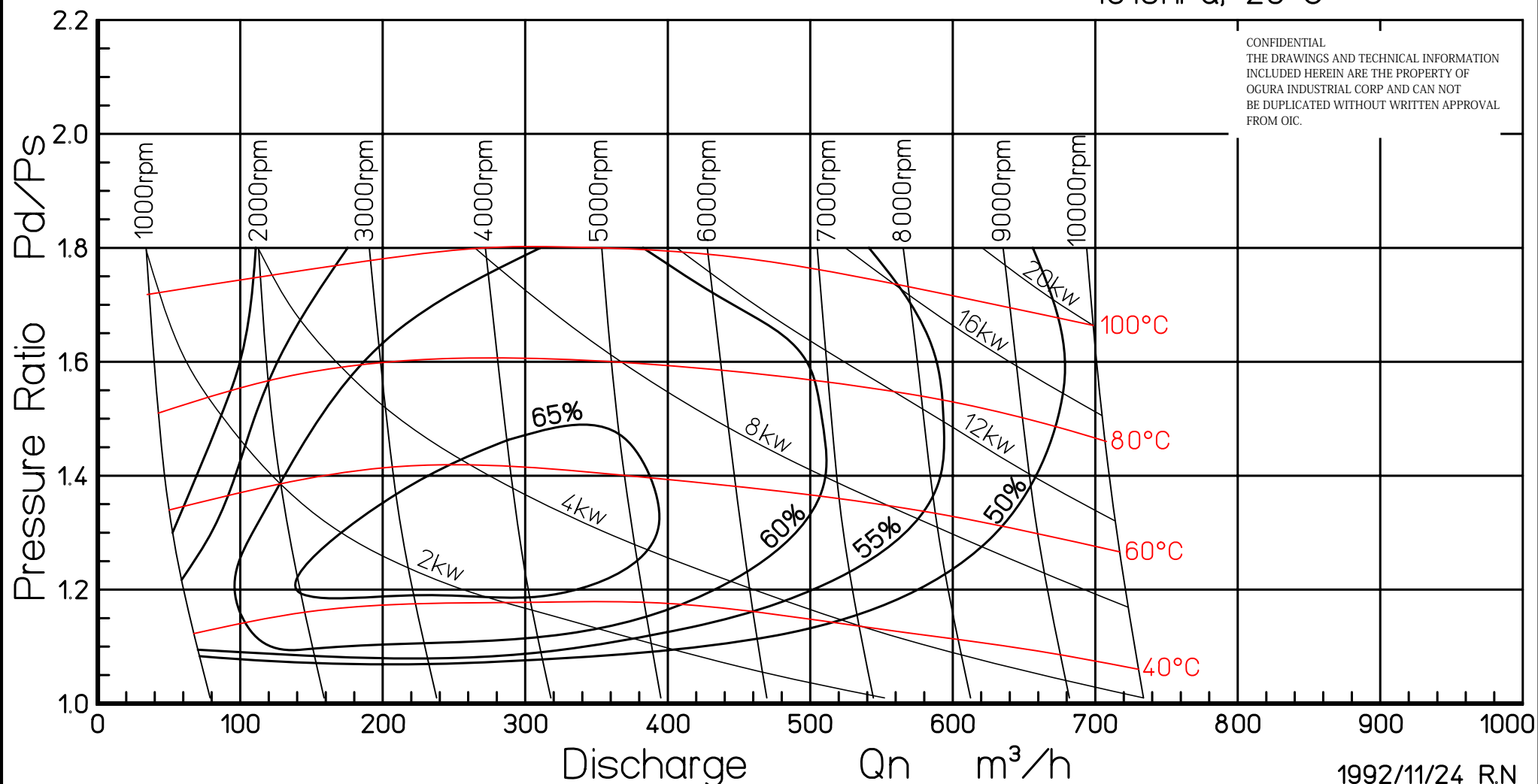
TX15

Supercharger Map

B0307

Ogura Wankel Supercharger (1460cc/rev)

1013hPa, 20°C



1992/11/24 R.N

OGURA CLUTCH CO.,LTD.

TOKYO JAPAN