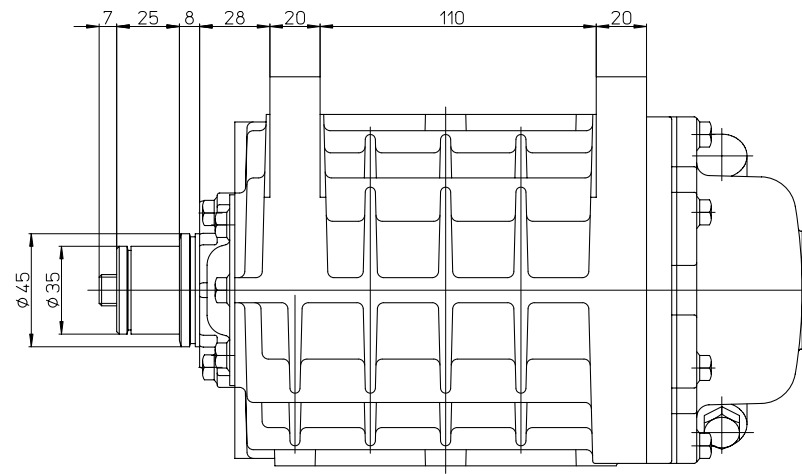
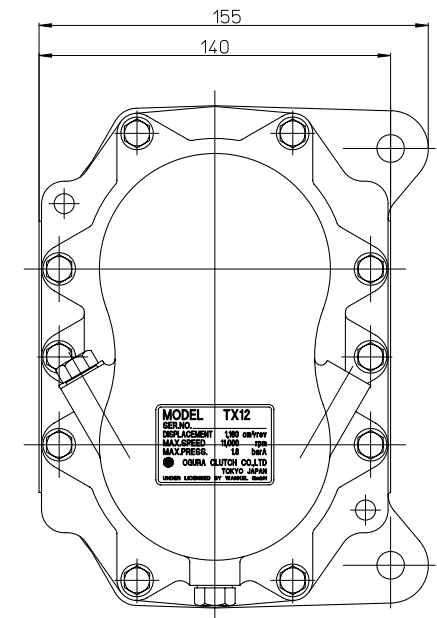
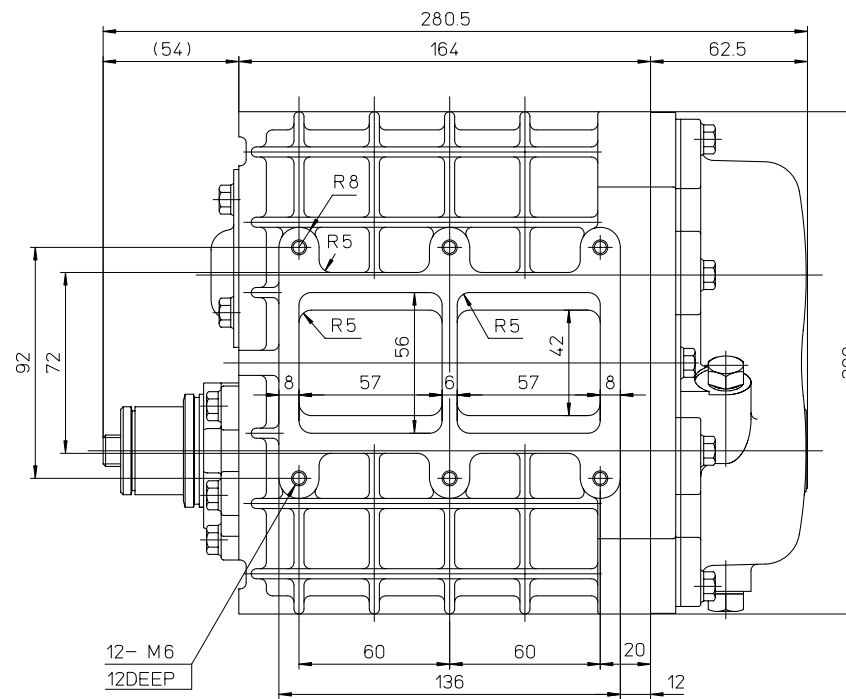
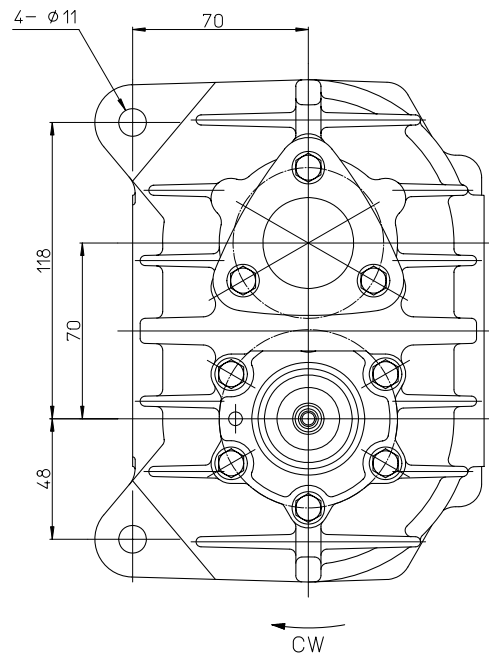





CONFIDENTIAL
THE DRAWINGS AND TECHNICAL INFORMATION
INCLUDED HEREIN ARE THE PROPERTY OF
OGURA INDUSTRIAL CORP AND CAN NOT
BE DUPLICATED WITHOUT WRITTEN APPROVAL
FROM OIC.

REV	REVISION RECORD	NOTE
1	O-ring and gasket were changed to liquid gasket.	Next manufacturing

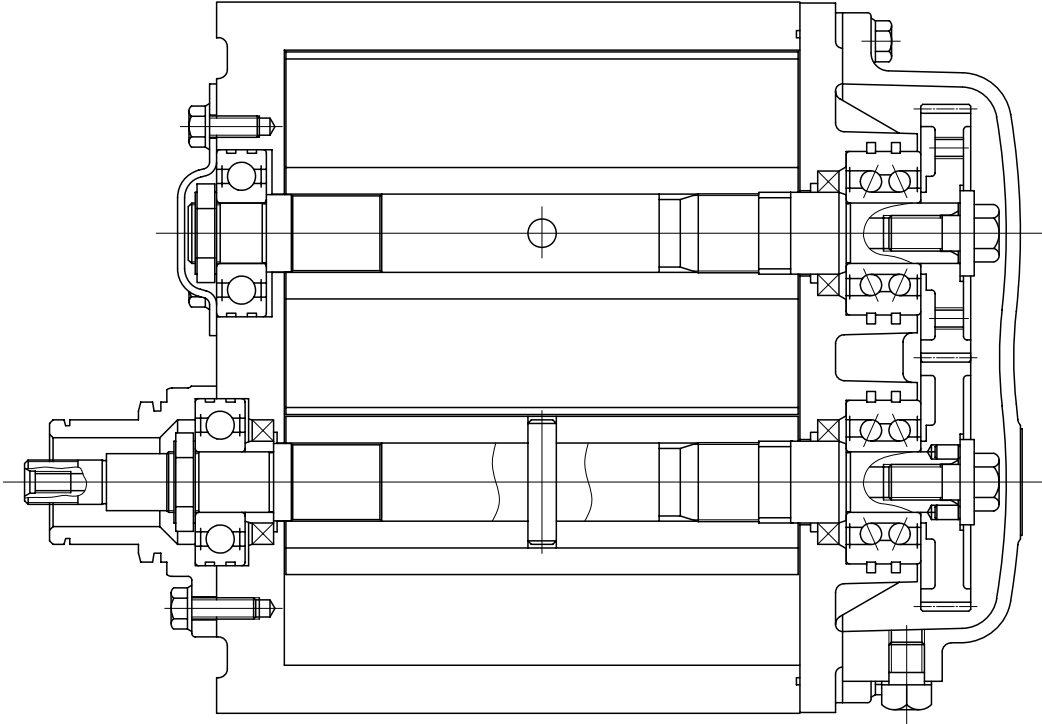
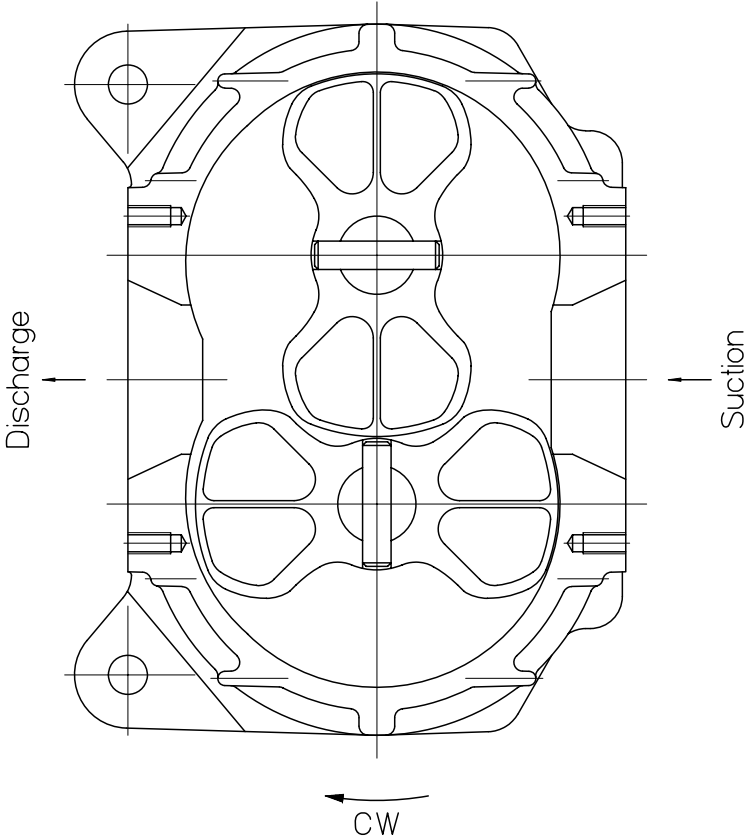


Specifications	
Displacement	1,160 cm ³ /rev
Max. R.P.M.	11,000 rpm
Max. Press. Ratio	1.8
Weight	8.5 kg
Oil Amount	55 cc



HISTORY	MPD 	DATE 1994/10/03	SIZE A1	CUSTOMER
	CHWD	DATE	SCALE	
Redrawn	S.FUSEJIMA	DATE 1994/10/03	MODEL TX12	ASSY NO
	DWN R.NOGAMI	DATE 1994/10/03		
ISSUE NO	PLANT	PARTS CODE	NAME	DIMENSION P/TH
ISSUE DATE		6113011202	S/C Assy	
		OSURA CLUTCH Co.LTD	DWG NO	611000004 
				SHT 1/2

CONFIDENTIAL
THE DRAWINGS AND TECHNICAL INFORMATION
INCLUDED HEREIN ARE THE PROPERTY OF
OGURA INDUSTRIAL CORP AND CAN NOT
BE DUPLICATED WITHOUT WRITTEN APPROVAL
FROM OIC.



REV	REVISION RECORD	NOTE
1	0-ring and gasket were changed to liquid gasket.	Next manufacturing

HISTORY	APPROVED <i>[Signature]</i>	DATE 1994/10/03	SIZE A2	CUSTOMER
Redrawn	CHKD S.FUSEJMA	DATE 1994/10/03	SCALE 1/1	MODEL TX12
	DWN R.NOAGAMI	DATE 1994/10/03		ASSY NO
ISSUE NO	PLANT	PARTS CODE 6113011202	NAME S/C Assy	DIMENSION (mm)
ISSUE DATE		OGURA CLUTCH Co.,LTD.	DWG NO 61100004	SHEET 2/2

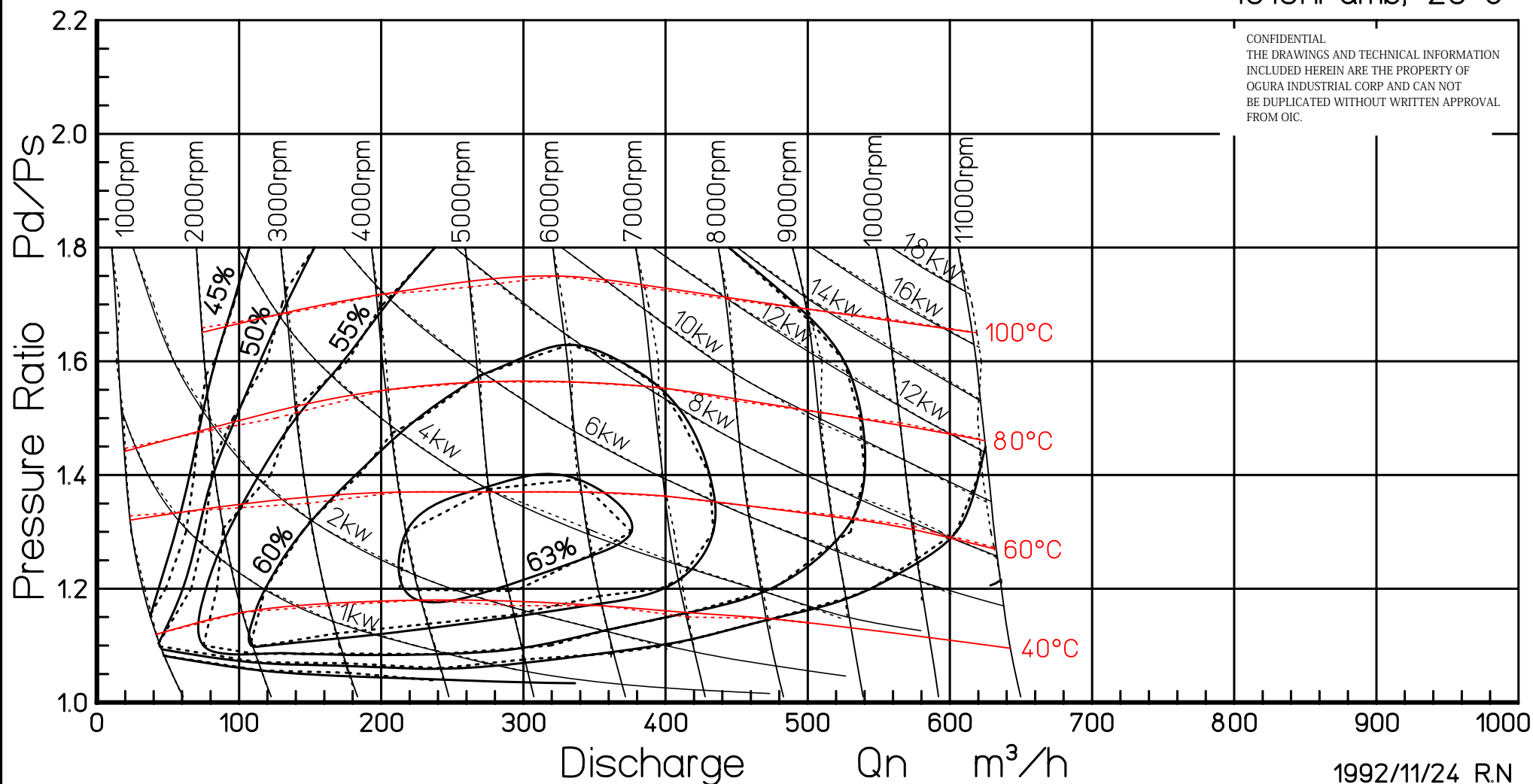
TX12

Supercharger Map

B0308

Ogura Wankel Supercharger (1160cc/rev)

1013hPamb, 20°C



1992/11/24 R.N

OGURA CLUTCH CO.,LTD.

TOKYO JAPAN