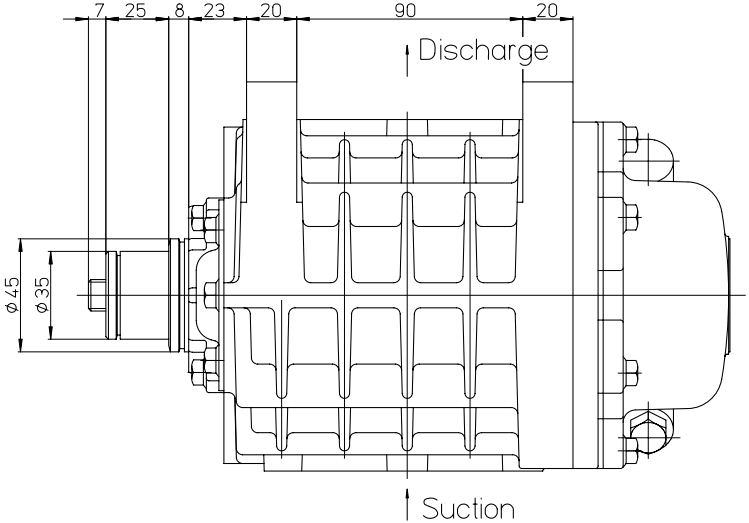


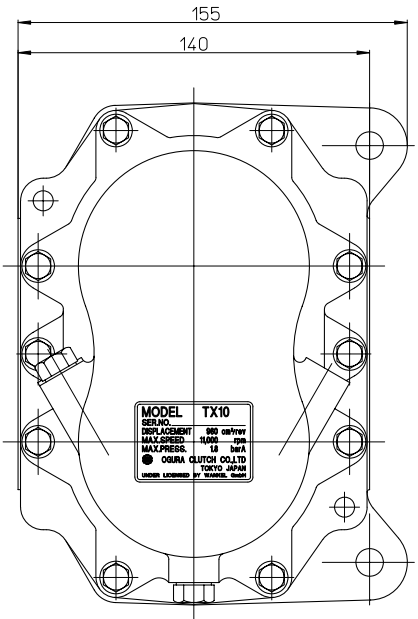
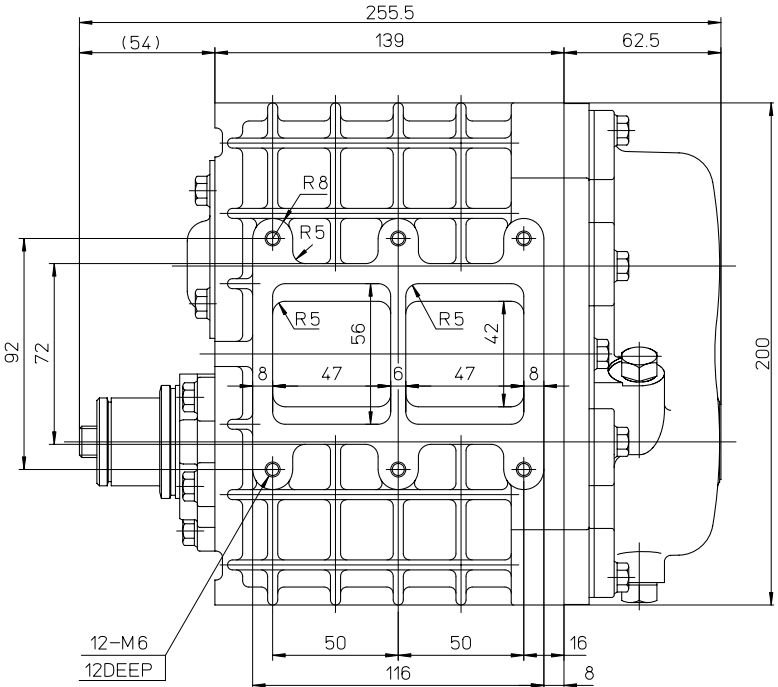
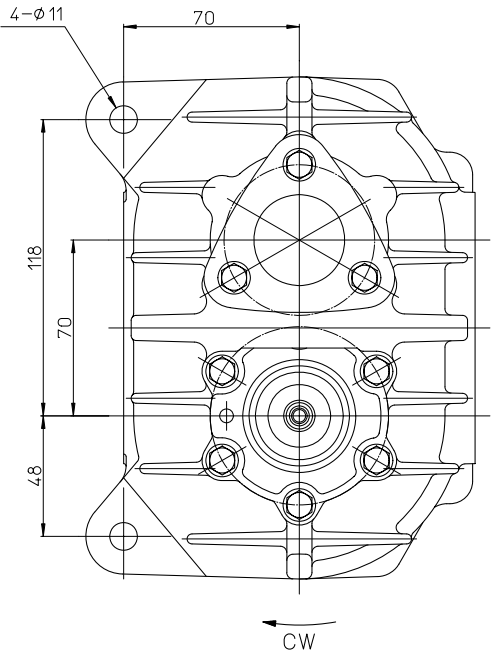
CONFIDENTIAL
THE DRAWINGS AND TECHNICAL INFORMATION
INCLUDED HEREIN ARE THE PROPERTY OF
OGURA INDUSTRIAL CORP AND CAN NOT
BE DUPLICATED WITHOUT WRITTEN APPROVAL
FROM OIC.

REV	REVISION RECORD	NOTE
△	O-ring and gasket were changed to liquid gasket.	Next manufacturing



Specifications

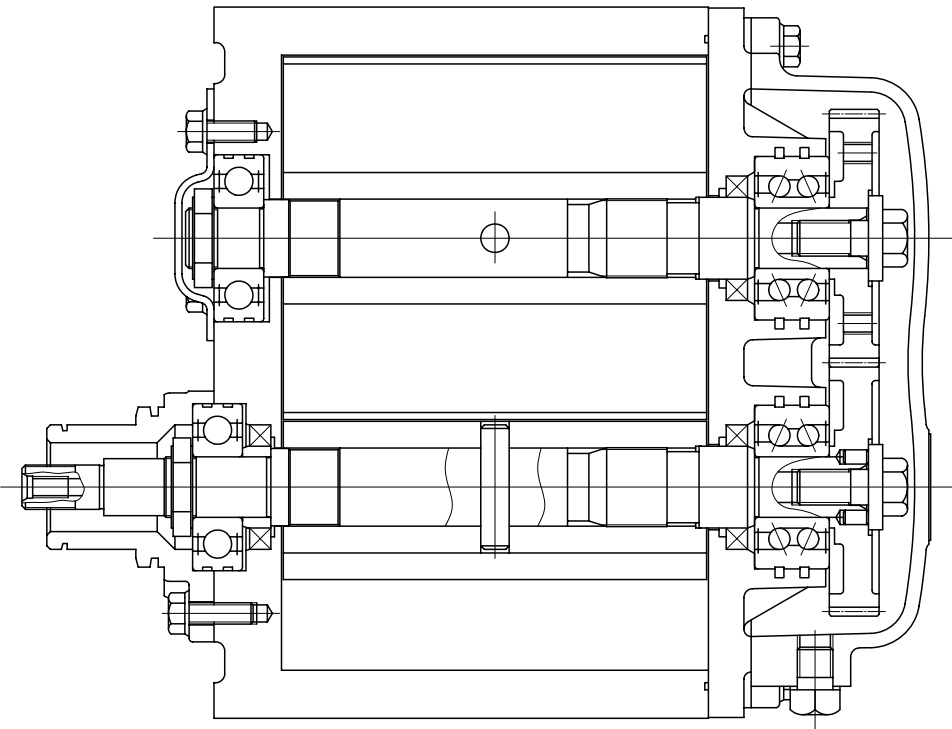
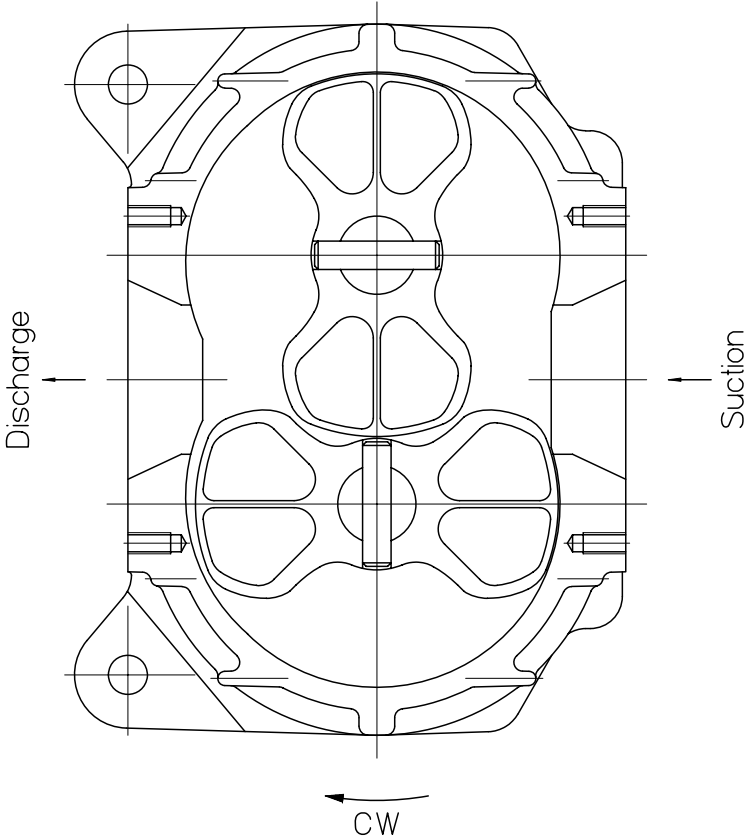
Displacement	960 cm ³ /rev
Max. R.P.M.	11,000 rpm
Max. Press. Ratio	1.8
Weight	8 kg
Oil Amount	55 cc



HISTORY	DATE	SIZE	CUSTOMER
Redrawn	DATE 1994/10/05	A1	MODEL TX10
DRW SFUSEJIMA	DATE 1994/10/05	SCALE 1/1	ASSY NO
DRW RNOGAMI	DATE 1994/10/05		
ISSUE NO	PLANT	PARTS CODE	NAME
6113011002		S/C Assy	OGURA CLUTCH Co.,LTD.
ISSUE DATE		DRW NO	611000003

CONFIDENTIAL
THE DRAWINGS AND TECHNICAL INFORMATION
INCLUDED HEREIN ARE THE PROPERTY OF
OGURA INDUSTRIAL CORP AND CAN NOT
BE DUPLICATED WITHOUT WRITTEN APPROVAL
FROM OIC.

REV	REVISION RECORD	NOTE
1	0-ring and gasket were changed to liquid gasket.	Next manufacturing



HISTORY	APPD <i>M. Hatakeyama</i>	DATE 1994/10/05	SIZE A2	CUSTOMER
Redrawn	CHKD S.FUSE/JMA	DATE 1994/10/05	SCALE 1/1	MODEL TX10
	DWN R.NO GAMI	DATE 1994/10/05		ASSY NO
ISSUE NO	PLANT	PARTS CODE 6113011002	NAME S/C Assy	DIMENSION (mm)
ISSUE DATE		OGURA CLUTCH Co.,LTD.	DWG NO 61100003	SHT. 2/2

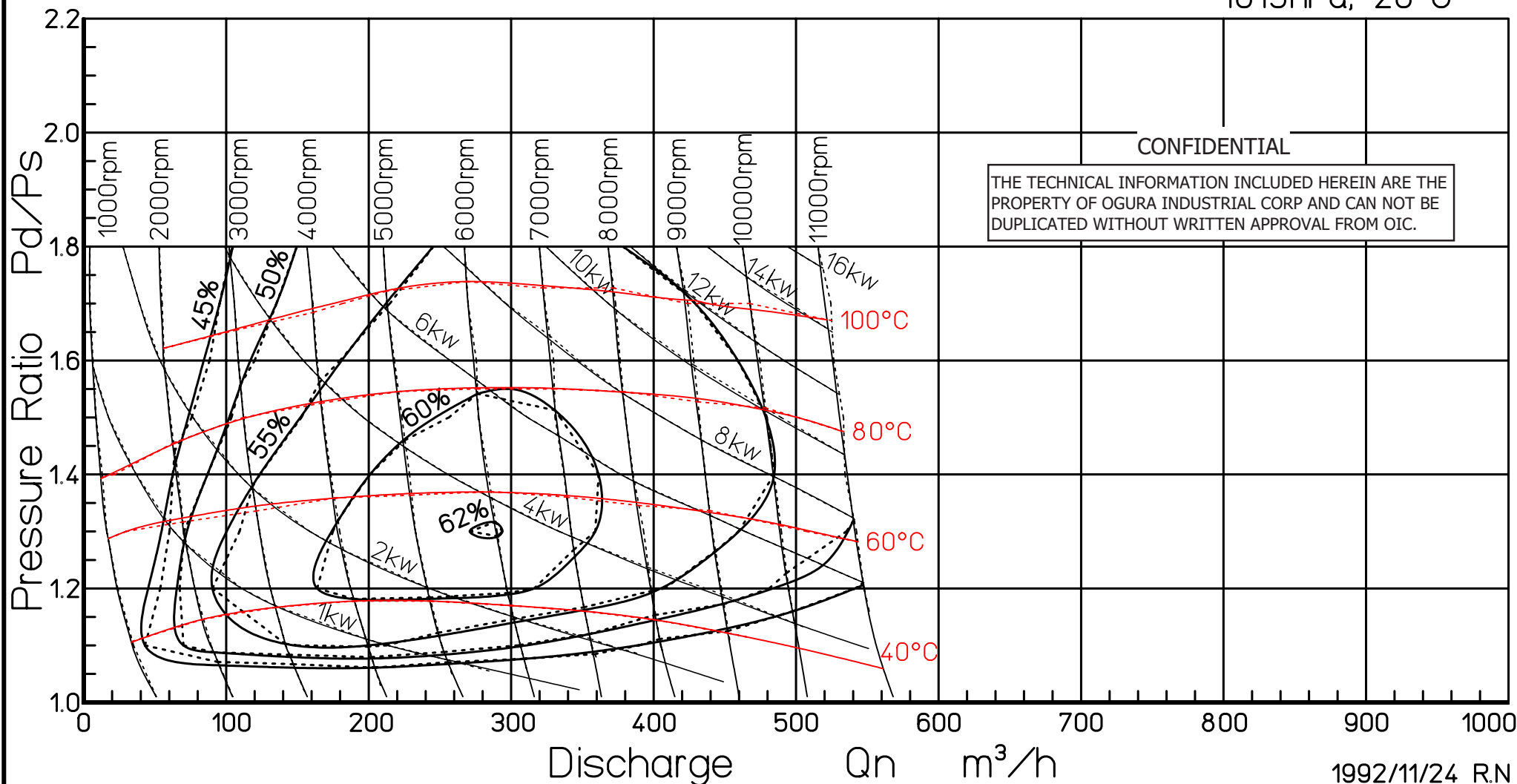
TX10

Supercharger Map

B0309

Ogura Wankel Supercharger (960cc/rev)

1013hPa, 20°C



1992/11/24 R.N

OGURA CLUTCH CO.,LTD.

TOKYO JAPAN