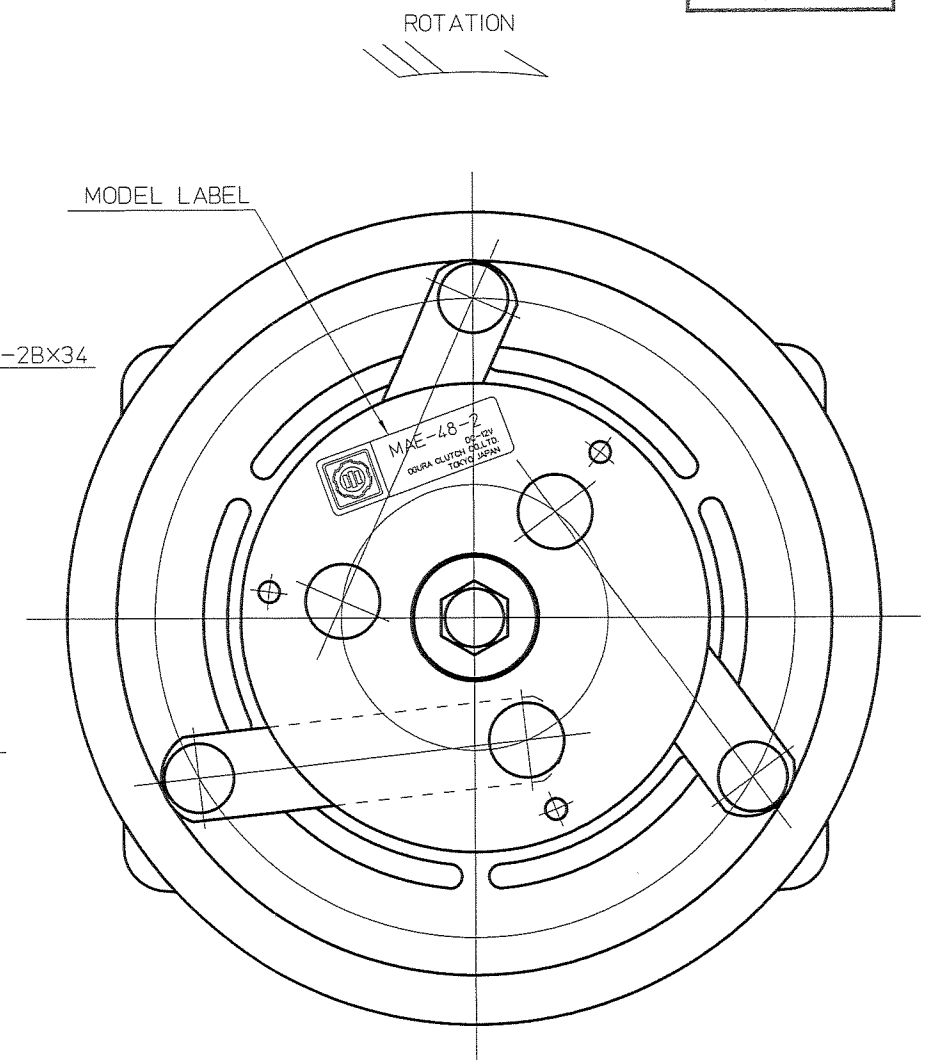
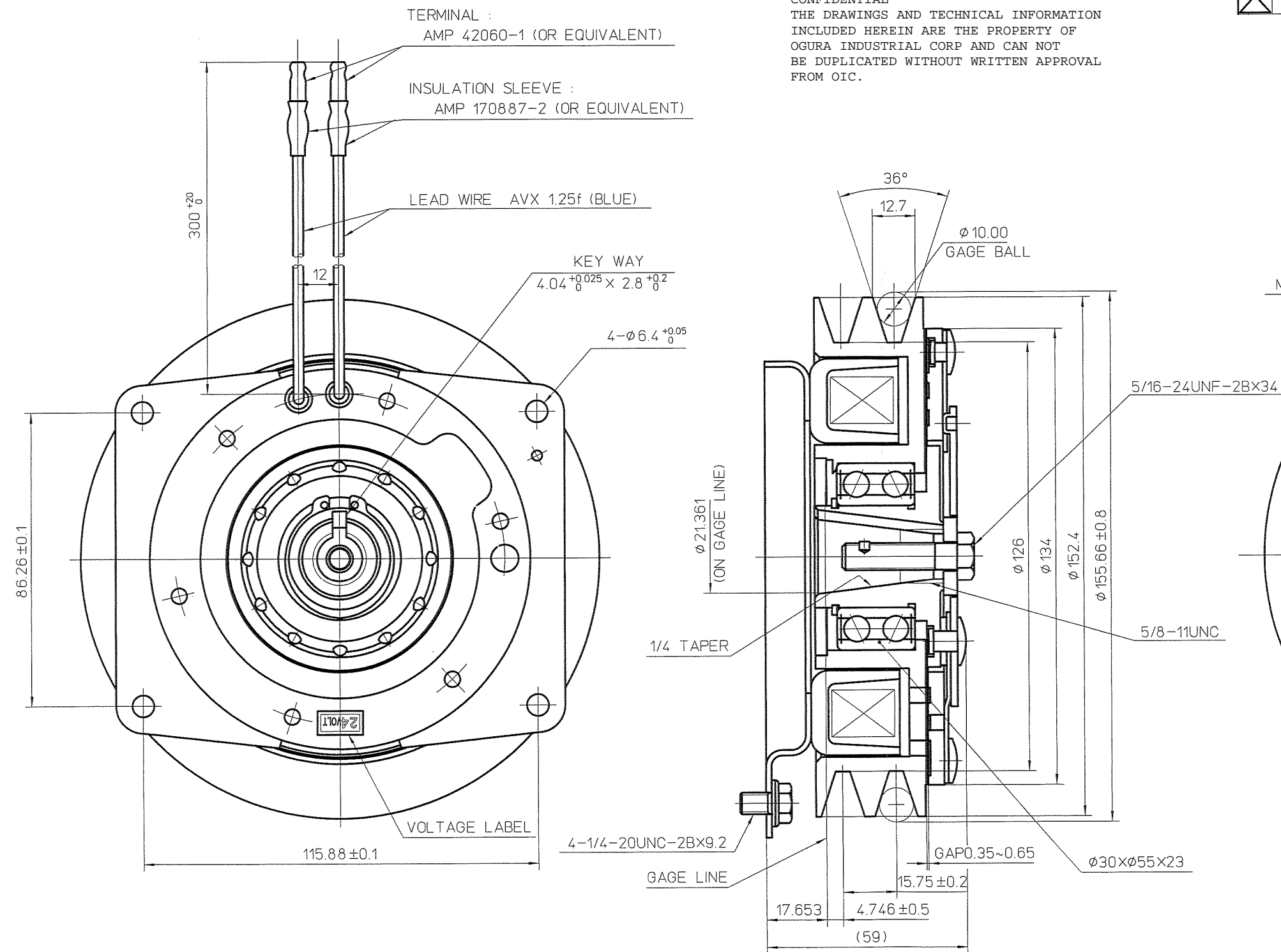


REV	REVISION STATUS	NOTE	DATE	CHG BY	CHK BY
△					
△					
△					

縮小図
量産図



	Friction surface
Rotor assy	None-coated
Armature assy	None-coated

SPECIFICATIONS

- EXCITING VOLTAGE : D.C. 24 V
- STATIC TORQUE
INITIAL : 39 N·m (4.0 kgfm)
AFTER BURNISHING : 101 N·m (10 kgfm)
- POWER CONSUMPTION : MAX. 30.3 W
- ROTATION : C.W.

NOTES

- SURFACE TREATMENT :
- BLACK PAINTING (CATHODIC ELECTRO-DEPOSITION)
- EXCEPT FOLLOWING PARTS
- FRICITION SURFACE
- RIVET, WASHER (3MFZn5)
- HUB INNER DIA.
- FIELD CORE COIL ASSY (3MFZn8)

SURFACE ROUGHNESS UNLESS OTHERWISE SPECIFIED	GENERAL TOLERANCE FOR CLASS 14	WORKING PROCESS	APPROVED BY <i>Y. Kurosu</i>	DATE <i>Apr. 16, 2015</i>	SIZE A2
	RANGE TOL.		CHECKED BY <i>Y. Y. I.</i>	DATE <i>Apr. 13, 2015</i>	SCALE 1/1
∇ 50S	OVER 0.5 10 6 \pm 0.1	MATERIAL	DESIGNED BY <i>Y. Arai</i>	DATE <i>Apr. 13, 2015</i>	
∇ 25S	6 30 \pm 0.2	MATERIAL CODE	DRAWN BY <i>Oshima</i>	DATE <i>Apr. 13, 2015</i>	
∇ 6S	30 120 \pm 0.3	MATERIAL SIZE	CUSTOMER EX		
∇ 3S	120 315 \pm 0.5	HEAT TRTM 0	MODEL MAE-48-2		
∇ 0.8S	315 1000 \pm 0.8	SURFACE TRTM 0	ASSY NO		
HISTORY 53721100		PARTS CODE 5913200000	NAME MAGNETIC CLUTCH		
ISSUE NO	PLANT 2	OGURA CLUTCH Co., LTD.	DWG NO 53721100		
ISSUE DATE 2015. 4. 16					