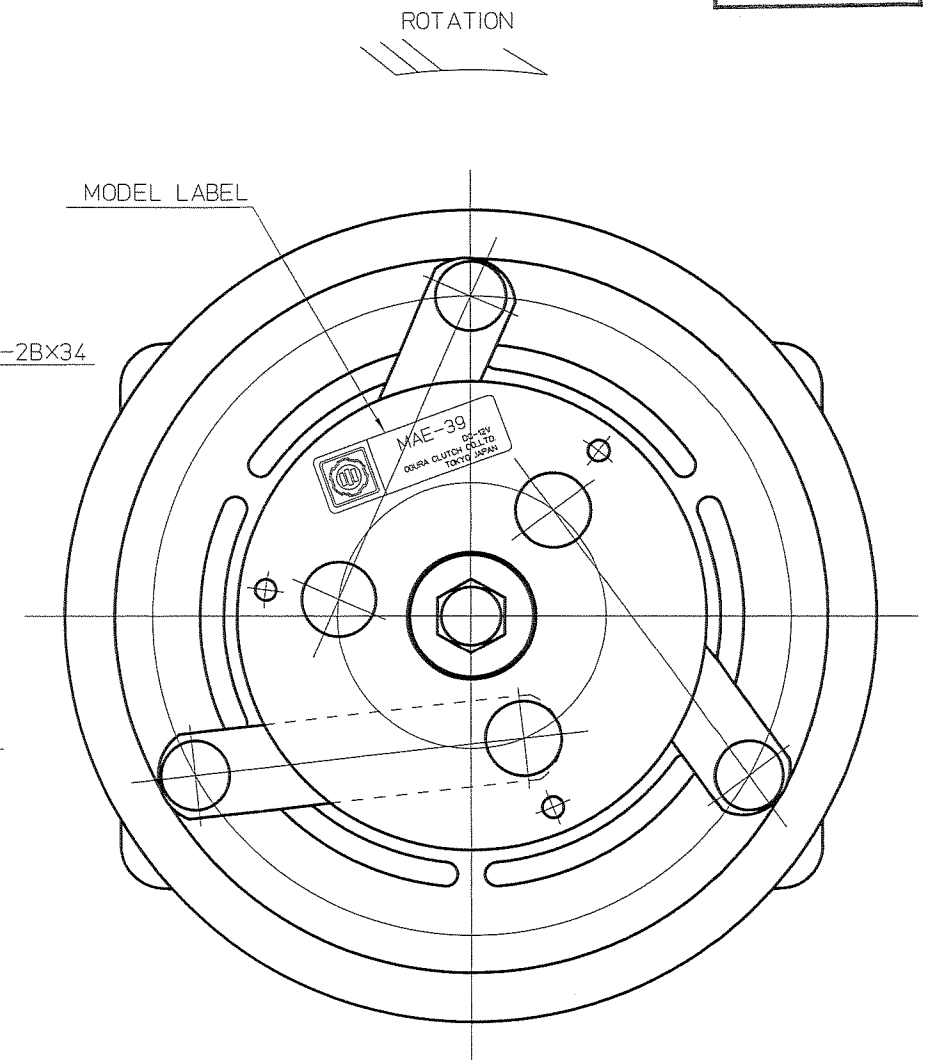
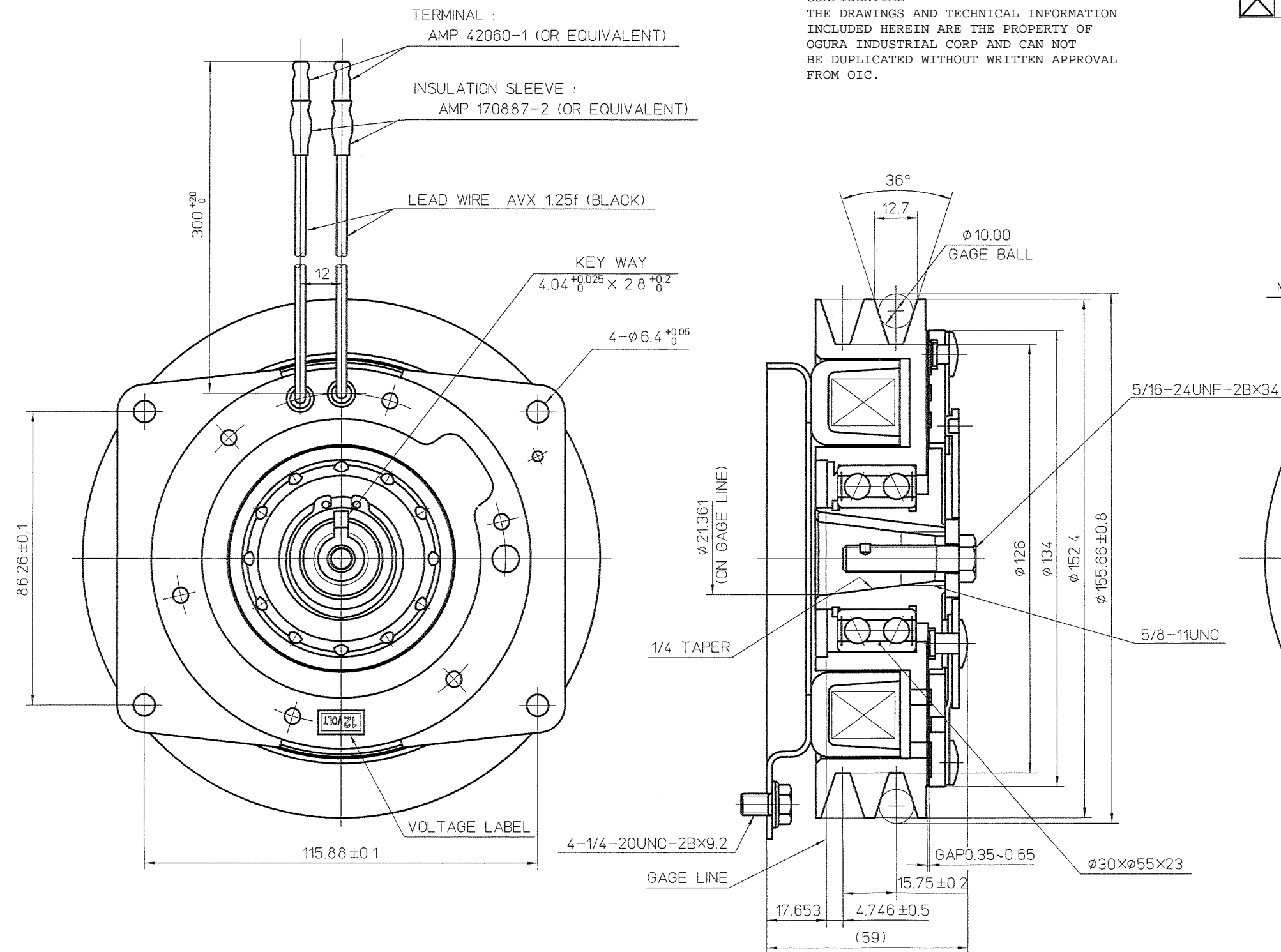


REV	REVISION STATUS	NOTE	DATE	CHG	BY	CHK	BY
△							
△							
△							

縮小図
量産図



	Friction surface
Rotor assy	None-coated
Armature assy	None-coated

SPECIFICATIONS

- EXCITING VOLTAGE : D.C.12 V
- STATIC TORQUE
INITIAL : 39 N·m (4.0 kgfm)
AFTER BURNISHING : 101 N·m (10 kgfm)
- POWER CONSUMPTION : MAX.40 W
- ROTATION : C.W.

NOTES

- SURFACE TREATMENT :
- BLACK PAINTING (CATHODIC ELECTRO-DEPOSITION)
- EXCEPT FOLLOWING PARTS
- FRICITION SURFACE
- RIVET, WASHER (3MFZn5)
- HUB INNER DIA.
- FIELD CORE COIL ASSY (3MFZn8)

SURFACE ROUGHNESS UNLESS OTHERWISE SPECIFIED	GENERAL TOLERANCE FOR CLASS 14	WORKING PROCESS	APPROVED BY <i>Y. Kuroguchi</i>	DATE <i>Apr. 15, 2015</i>	SIZE A2
∇ 50S	RANGE / TOL.	MATERIAL	CHECKED BY <i>T.Y. Y.I.</i>	DATE <i>Apr. 14, 2015</i>	SCALE 1/1
∇ 25S	OVER 0.5 TO 6 ± 0.1	MATERIAL CODE	DESIGNED BY <i>Y. Anai</i>	DATE <i>Apr. 14, 2015</i>	
∇ 12.5S	6 30 ± 0.2	MATERIAL SIZE	DRAWN BY <i>F. Oshima</i>	DATE <i>Apr. 13, 2015</i>	
∇ 6.3S	30 120 ± 0.3	HEAT TRTM	CUSTOMER EX		
∇ 3.15S	120 315 ± 0.5	0	MODEL MAE-39		
∇ 1.6S	315 1000 ± 0.8	SURFACE TRTM	ASSY NO		
HISTORY 53721000	0	0	NAME		
ISSUE NO	PLANT 2	PARTS CODE 5913100000	MAGNETIC CLUTCH		
ISSUE DATE 2015. 4. 16	OGURA CLUTCH Co.LTD.		DWG NO 53721000		