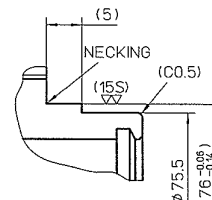
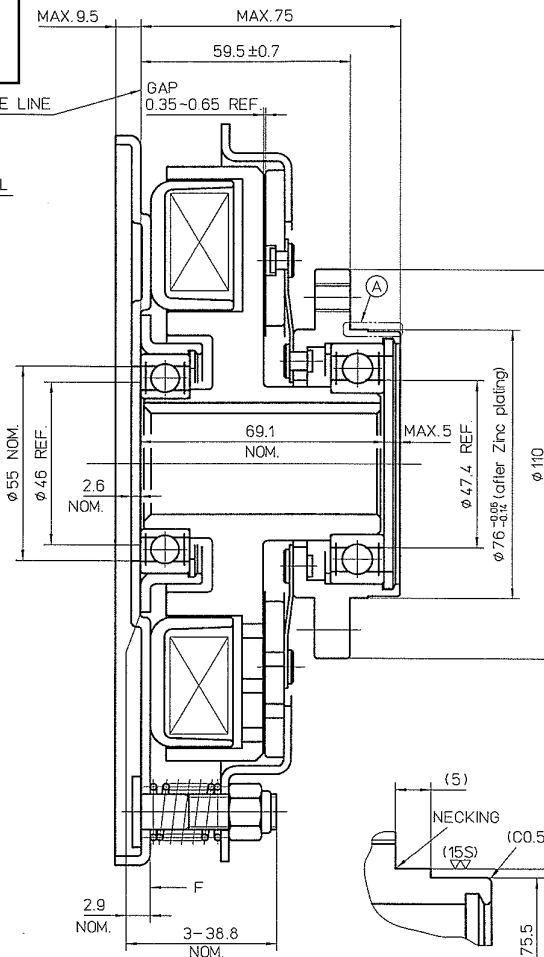
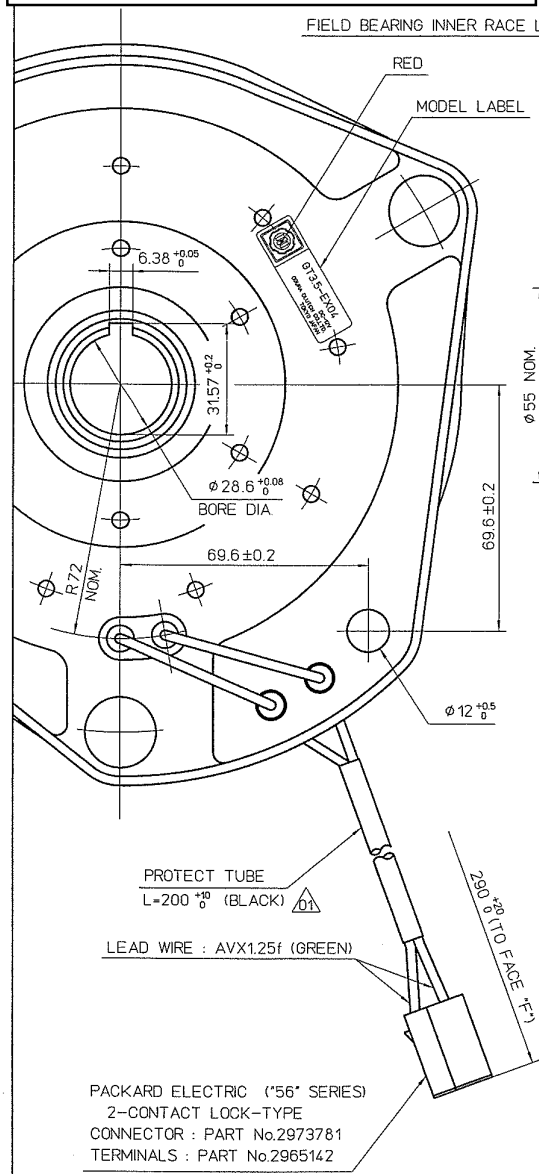


CONFIDENTIAL

THE DRAWINGS AND TECHNICAL INFORMATION INCLUDED HEREIN ARE THE PROPERTY OF OGURA INDUSTRIAL CORP AND CAN NOT BE DUPLICATED WITHOUT WRITTEN APPROVAL FROM OIC.

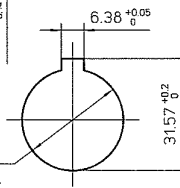


SPECIFICATIONS (at 20°C)

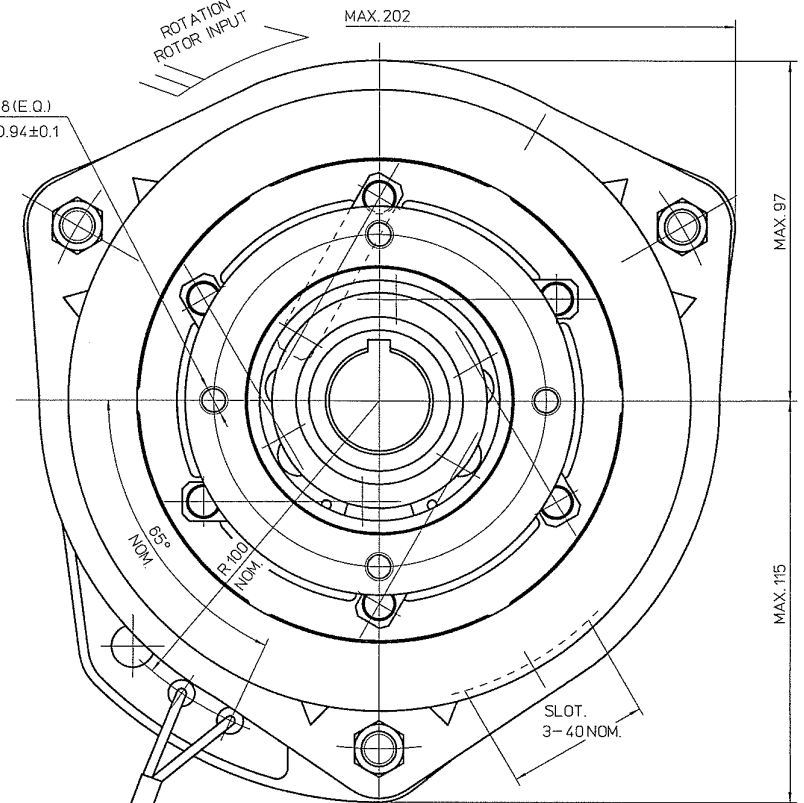
EXCITING VOLTAGE	D.C. 12 V
POWER CONSUMPTION	MAX. 68 W
STATIC CLUTCH TORQUE	
PREBURNISHED	MIN. 98 N·m (at OGURA)
FINAL NOMINAL	339 N·m
STATIC BRAKE TORQUE	
INITIAL	MIN. 1.8 N·m
FINAL NOMINAL	4.9 N·m
MIN PULL IN VOLTAGE	D.C. 8 V
	(COPPER COIL)

CLUTCH BORE SIZE

	Friction surface
Field rotor assy	None-coated
Armature assy	Coated



4-M8 (E.Q.)  
P.C.D. 94  $\pm 0.1$



NOTES

- Airgaps must be adjusted when coilsprings and airgap adjustment nuts are incorporated into the clutch/brake at the assembly.
- Phosphate coating (Armature plate)
- BEARINGHOUSING : Zinc plating
- This clutch model is burnished at the factory before shipment.

\*本品はクラッチASSY後にクラッチ傾らし作業を行なうこと。

SURFACE ROUGHNESS UNLESS OTHERWISE SPECIFIED	GENERAL TOLERANCE FOR CLASS 11	WORKING PROCESS	APPROVED BY Y. Harada	DATE Mar. 29, 2010	SIZE A2
▽ 50S	RANGE TOL.	MATERIAL	CHECKED BY Y. Harada	DATE Mar. 29, 2010	SCALE 1/1
▽ 25S	6 / 30 $\pm 0.2$	MATERIAL CODE	DESIGNED BY Y. Oono	DATE Mar. 29, 2010	
▽ 15S	30 / 120 $\pm 0.3$	MATERIAL SIZE	DRAWN BY M. Araki	DATE Mar. 25, 2010	
▽ 8S	120 / 315 $\pm 0.5$	HEAT TRT	CUSTOMER EX		
▽ 0.8S	315 / 1000 $\pm 0.8$	TRIM	MODEL GT3.5-EX04		
HISTORY 53468700	SURFACE TRIM		ASSY NO.		
ISSUE NO. 2	PARTS CODE 5913100000		NAME MAGNETIC CLUTCH & BRAKE		
ISSUE DATE	OGURA CLUTCH Co.LTD.		DWG NO. 53468700		