



## OGURA INDUSTRIAL EXPANSION COMPLETED

*Somerset, NJ*

**O**gura Industrial Corporation (OIC) has completed its six month long expansion and renovation to the office area.

The expansion involved taking over a vacant portion of the existing building and reconfiguring the expanded footprint to add offices and to expand workstation areas to allow for proper COVID distancing between employees.

A total of five new offices were added as well as a larger conference room and additional meeting rooms.

The expanded footprint also leaves room for new workstations for new personnel when they will be required in the future.

Since many employees were working from home during the pandemic, construction of the new area and move of the office took place with minimal business interruptions.

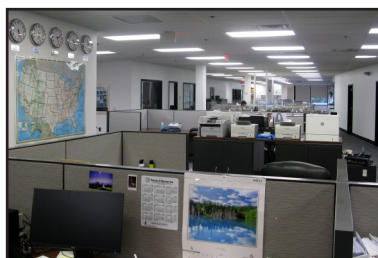
Besides the new construction, new computers were also installed and the operational system software was upgraded. Also to improve company-wide collaboration, day to day communication was moved to Microsoft 365 and Microsoft Teams. To handle more video communications, a new higher speed internet package was installed. ●



*Entrance area showing  
worldwide locations*



*New offices for  
customer service*



*New workstations in the rear  
have new plexi-glass shields*



*Conference room with  
86 inch monitor*

## NEW SANSEN FACTORY COMPLETED

*Kiryu, Japan*

**S**ansen, (a subsidiary of Ogura Clutch, Co.) has completed its new factory and office area. The new facility is approximately 27,200 sq. ft. It will have manufacturing on the first floor and with some lighter manufacturing and offices on the second floor.

The main products for Sansen are coils for magnetic clutches and other specialty products.

Because of COVID-19, construction completion took a little longer than anticipated, but everyone is happy to be in the new facility with the latest manufacturing equipment. ●



*New Sansen Factory*

## Ogura Sales Rep Profile

**DARLENE MORTON**  
*JT CHAPMAN CO.*

**H**i, my name is Darlene Morton and I am the Operations Manager for JT Chapman Co. I began working for JT Chapman in 1986. I had sales and manufacturing experience but not in the power transmission industry. There was a lot to learn, and there continues to be more to learn, but I look forward to it every day (or most every day).

I really enjoy the relationships that I have formed with Ogura, the other reps for Ogura, the folks at J.T. Chapman Company, along with the friends I have made through PTR. A.

My husband, Bill and I married in 1972. Two years later our son was born. We are blessed with two wonderful grandchildren. Paige is in her second year at the University of Texas in Austin and is a very talented musician. Our grandson, Liam, is now in the eighth grade. We live close to our grandchildren and enjoy watching Paige ride horses, play lacrosse, and every weekend during baseball season is spent at the ballpark watching Liam play tournament ball.

Bill and I live in Prosper, Texas, which is north of Dallas, with our two English bulldogs, Rose Tyler and Gibson Taylor. We are active in our community with LovePacs Prosper, an organization that helps feed children that are on free or reduced lunches during the summer and school holidays. We provide for over 600 children in our little town. J.T. Chapman Company employees are very generous in helping support this effort. We are also involved with Bulldog rescue as well as our area Bulldog Club. ●



*Darlene and Gibson*

## CORONAVIRUS UPDATE

*Kiryu, Japan*

**I**n the beginning of April, Ogura instituted various policies regarding workplace interaction to reduce the chance of contracting the coronavirus.

Ogura has adopted the three C's policy which are: Avoid Closed spaces, Crowded places and Close contacts. Where possible, meetings are being done remotely. Any in-plant meetings have limitations on the amount of people that can be in the meeting rooms, and those personnel are required to maintain distancing. To protect each other, all factory personnel and office workers wear masks at all times with the exception of during lunch in the company cafeteria. Both lunch times for personnel and seating in the cafeteria have been staggered to reduce the chance of infection.

Outside education sessions, tradeshow and quality circle meetings were cancelled. Additionally, all employees are required to monitor their body temperatures and temperatures of household members on a daily basis and not come to work if temperature is above normal.

To date, these measures have been very successful as no employees in any of the manufacturing operations have contracted the coronavirus. ●

## NEW CHINA WEBSITE

*China*

**T**he four Ogura facilities producing products in China have collaborated and created a new website for the Chinese market. Although the site shows all Ogura products, it concentrates on the largest markets in China which are holding brakes for robotic equipment and motors, micro clutches for paper transports for printers and copying machines, elevator brakes for commercial and residential buildings, air conditioning compressor clutches for cars and trucks and various specialty coils for automotive applications. In the future, employment opportunities for the four Ogura operations will also be listed on this site. ●



*New Website*



## Application Story

# OGURA HELPS PROVIDE THE “GO” IN LEXMARK’S NEW GO LINE™ DEVICES

**G**oals for the new Lexmark printer line were: *GO Faster, GO Longer, and GO Further.* Ogura’s MIC3.5C helped them deliver on all three.

When Lexmark wanted to upgrade their small and medium business printer line-up, they asked Ogura for a little help with their paper-handling technology (via pick-clutch). Ogura responded in a big way and is now pleased to be a part of the Lexmark GO Line series of printers.

Headquartered in Lexington Kentucky, Lexmark is a global imaging solutions leader that recognized the benefit of including Ogura clutches in their new line up. The Lexmark product development team had three primary requirements for the GO Line:

- ♦ **Go Faster:** to make it easy for SMB customers to find the printer or multifunction device that meets their needs, with devices that are ready to go right out of the box.
- ♦ **Go Further:** to offer the ideal combination of enterprise level features and security at the right price for SMB users.
- ♦ **Go Longer:** to engineer the devices to last, with durability and reliability in mind.

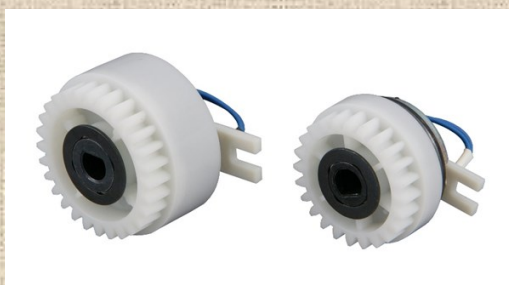
Lexmark GO Line devices are an entry-level to midrange color laser “all in one” printer, designed for use in small-to-midsize offices and workgroups. In addition to being a “truly global” platform for business printing, the GO Line has earned PC Magazine’s “EXCELLENT” Rating.

According to Mr. Bert Gold in Lexmark Global Sourcing, “Lexmark was looking for more than just the right component (clutch); we were looking for the right partner. Ogura met both of these requirements.”

In this application, the input is from a motor driving a gear train that drives various rollers in the printer. The input gear for the clutch is attached to the armature. When power is applied to the clutch coil, the armature is magnetically attracted to the rotor and the clutch engages. A shaft is attached to the rotor and that shaft has rollers that contact the printer paper (turning the rollers feeds the paper). When the paper is finished printing power is removed from the clutch, the armature separates from the rotor, creating an air-gap, whereby, stopping the pick shaft from turning. The clutch’s “on-off” response time is typically very fast, providing the “hi-speed” printing we have come to expect in our busy lives.



*Lexmark GO Series  
MC3426ADW Printer*



*Ogura MIC3.5 Series*

*Some of the key features for the MIC3.5 Series are:*

*Extremely high quality and repeatability*

*Very high torque in an extremely small package  
(because of its triple flux design)*

*Torque ranges are available from .25 Nm to 2.8 Nm  
Ogura Design options include various gears, pulleys,  
lead wires, and connectors*

*All of these key features are found at a very  
competitive price from Ogura*

Lexmark concludes: “Ogura is a great team to work with. We are very pleased with the results and their continued support.”●





## Ogura in the News

### LAWNMOWER RACING

*Henderson, TN*

**T**he Stabil Lawnmower Racing series has been canceled for this year, but Chuck Miller is still getting around to some local races. In July, Chuck went to a race in Henderson, TN.

In the heat race, Chuck started off in 3<sup>rd</sup> place and maintained that until the last corner of the last lap where the racer in 2<sup>nd</sup> place tried to overtake the leader. Both the 1<sup>st</sup> and 2<sup>nd</sup> place mowers crashed and Chuck swerved and narrowly avoided hitting them, but the 4<sup>th</sup>, 5<sup>th</sup> and 6<sup>th</sup> place racers behind him were not so lucky, so there was a massive pile up on the track. After looking at the videos, they were able to determine the starting order for the feature race (with the racers that were able to fix their machines.) Since Chuck had finished in 1<sup>st</sup> place for the heat race, he had the pole position. Chuck took off and never looked back and ended up winning the feature race.

Normally, in lawnmower racing, they just race for fun and trophies, but in this case, there was a sponsor and Chuck was awarded \$200 for winning. Chuck decided to donate the \$200 which went to a local church's youth group. Chuck may try to do a couple more of the local races depending upon travel requirements for COVID.●



*Chuck Miller with his 1st place trophy*



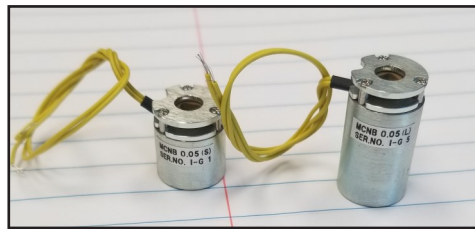
*Chuck donating his winnings to the local church's youth group*

### OGURA ANNOUNCES NEW SERIES OF MICRO HOLDING BRAKES

*Somerset, NJ*

**W**hat's half the size of a dime and changing the motion control industry?

These groundbreaking brake designs from Ogura excel in the medical, aerospace, and robotics industries. The power-off spring applied brakes provide torque mechanically, but actuate electrically. The primary function is to provide holding torque, yet they can be used for emergency stopping as well.

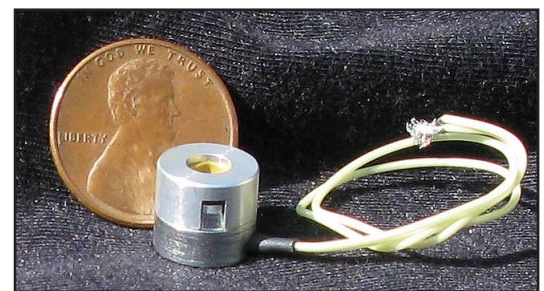


*New micro holding brakes*

They are typically mounted on small electric motors. These brakes have high speed capability, and because high ratio gearboxes are normally included in the drive system, torques are only required in the mNm range.

The brakes are lightweight and can weigh as little as 7 grams. Power requirements are very low, from only 0.34 W.

Custom designs, sizes, and mounting styles are available following an application review. Torque is very precise. With advanced manufacturing techniques, Ogura can achieve top quality and high-volume repeatability.●



*Groundbreaking design from Ogura*