



NEW CHINA PLANT ANNOUNCED

Mushaku, China

The latest manufacturing facility for Ogura products is being built in the Shanghai area of China. This is Ogura's third manufacturing facility in China. Ogura is currently renovating an existing building that plans to have production started before the end of this year. Like the previous mobile clutch plant that opened earlier this year in China, the new facility is 100% owned by Ogura.

At 50,000 square feet, this facility is smaller compared to the other manufacturing facilities but it is also going to be one of the most focused. This plant will make spring applied holding brakes for elevators.



New industrial manufacturing facility in China

Because of the building growth and desire to use less overall land area, buildings are becoming taller in China, which is necessitating the need for elevators.

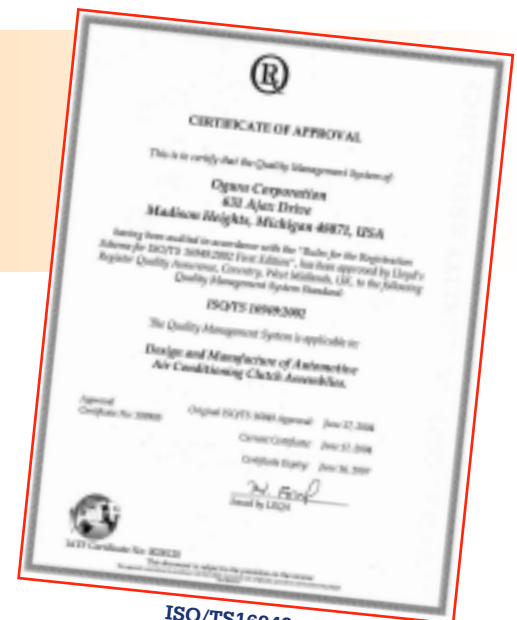
This in turn has caused the

elevator manufacturers to move some of the assembly operations to China. This assembly plant will produce more local content which will help Ogura's customers win more contracts.

USA Manufacturing Plant Receives ISO/TS16949 Certification

Detroit, Michigan

For approximately the past year and a half Ogura Corp. in Madison Heights, Michigan and HPPC in Chesterfield, Michigan have been going through the ISO/TS16949 certification. The new certification is more global in its scope and covers concerns of both Europe and Asia. It replaces the existing QS9000 certification which expires in December 2006.



ISO/TS16949

OIC EMPLOYEE PROFILE

Jim Andes Application Engineer

My name is Jim Andes and I recently joined Ogura Industrial as an Application Engineer.

I was born and raised in NJ, and have lived here all but six months of my life.

I graduated from Kean University, Union, NJ with a BSMS in 1992. Shortly after that I joined Electroid Company, Springfield, NJ as a Production Control Manager/Expeditor. After a year or two of wearing multiple hats I was promoted to inside sales representative. I enjoyed the successful five year career at Electroid but left the Company in 1999 to move to Florida. My stay in Florida was short lived and in 2000 I returned to NJ. Since then I have been employed by Ingersoll Rand Co., Edison, NJ as an Application Engineer. This involved application and sales of compressed air systems to numerous industries including manufacturing, pharmaceutical, auto repair, plastics, wood-working, dry cleaning, and others.

In my leisure time I enjoy riding my Harley Davidson and playing sports. I also enjoy working on and improving my home in Avenel, NJ.

It feels great to be reunited with some former co-workers and to be welcomed by my new friends at Ogura. I look forward to working with all of you and I'm sure that with your help we can work together to further the success of Ogura.



Jim Andes

ORC's New Carbon Clutch Disk

Since their debut at the Tokyo Auto Salon earlier this year, patient customers have been awaiting the production release of the new series of carbon racing clutches. These new clutches have been appraised by D1 car drivers and are now available to the general public. The new disks go into both single and twin plate assemblies and can be used with most Japanese high performance car engine/transmission combinations.



New light weight, high speed carbon clutch plates

EMPLOYEES WIN JUMBO PARADE GRAND PRIZE AT YAGIBUSHI

Kiryu, Japan

At a scene more reminiscent of the start of Most Extreme Elimination (MXC) than a typical summer festival, many of Ogura's employees participated in the festival with the hopes of capturing the grand prize that eluded them last year. Saki consumption was once

again an important part of this year's festival. The weather was perfect, all employees had a great time, and look forward to a repeat grand prize win next year.



Employees with the float that helped them win the grand prize.



An Ogura employee hangs on as she tries to ride the big Makoshi.

A BOTTLE OF AIR TO GO PLEASE

Every day they risk their lives to save our homes and property, our places of work or our dried forests and woodlands, as well as our own lives and that of family and friends. Since our national tragedy of three years ago, we have rightly recognized our firefighters across the country as heroes. With their lives in jeopardy at any given

"The ST1W has added value as well as reduced cost to Bauer while providing greater flexibility and better control . . . Ogura is proud to be a part of this system."

moment while fighting a fire, it is of the utmost importance these men and women deserve the best, most technologically advanced equipment available.

We all know that when a firefighter enters a burning building an air tank is necessary for him or her to complete the task. However, when a fire is particularly large or is out of control, the tank's capacity may not be enough to allow the firefighter to remain on the scene. So what happens then?

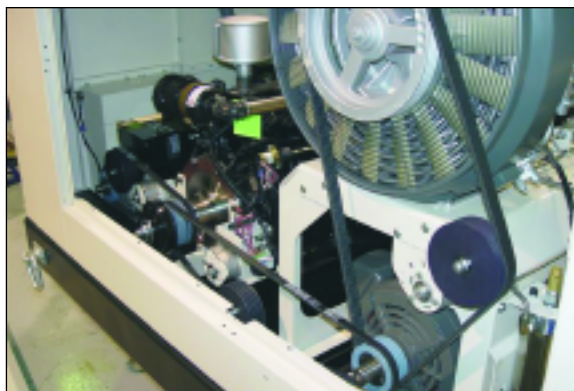
Bauer Compressors of Norfolk, Virginia manufactures an integrated breathing air system mobile trailer which allows fire companies to refill breathing air bottles on location. The application of this product is very wide – potentially from city streets to national parks to presently on military air bases to our soldiers overseas. This product also has appli-



The Bauer Breathing Air Mobile Trailer System

cations for scuba diving as well as for search and rescue operations that take place underwater.

The DDTR Mobile Trailer Systems feature a dual drive of diesel (Mitsubishi 37hp engine) or electric power, depending upon the energy source available at the scene.



Clutch/belting system allows diesel, electric or generator power to be used independently

The system also includes a generator to power scene lighting and any additional electrical devices.

In Bauer's previous system, a centrifugal clutch had been used to allow the operator to switch from electric power to diesel or vice versa. As the system became more advanced technologically, they found the centrifugal device difficult to control, as well as being



Cutaway view of the Bauer Breathing Air Mobile Trailer System

quite costly. They approached Ogura Industrial for a better solution. After evaluating speeds, loads and duty cycles, the MA-GT-ST1W mobile/general purpose clutch was selected. The electric clutch is mounted to the diesel engine, which is belted to the electric motor, and in turn is belted to the compressor. This allows the operator to drive through the electric motor and still run the compressor while in diesel mode, but eliminate the engine while running the electric motor. An additional belt allows the diesel to run the generator without running the compressor, something the centrifugal device could not accomplish.

The ST1W has added value as well as reduced cost to Bauer while providing greater flexibility and better control. The clutch is rated at 250 ft. lb. of torque and features a mounting hub for the pulley or sheave of the customer's choice. Ogura is proud to be a part of this system. To learn more about our General and Mobile product line, as well as our Industrial and Lawn and Garden products, we invite you to visit our web site at www.ogura-clutch.com.



OGURA INDUSTRIAL CORPORATION

P.O. Box 5790, 100 Randolph Road, Somerset, NJ 08875-5790
Tel: 732-271-7361 • Fax: 732-271-7580
E-mail: oguranj@ogura-clutch.com
Web Site: www.ogura-clutch.com



Happy Holidays from the staff of **Ogura Industrial**

OGURA IN THE NEWS

EETC Adds Clutch/Brake Certification



Contestant adjusting for clutch wear at the EETC competition in Louisville.

Louisville, Kentucky

Equipment and Engine Training Council has added (Ogura Contributed) PTO clutch brake installation and troubleshooting to their certification program.

Students are required to take a written test covering installation and troubleshooting and are also required to show how to make an adjustment to the clutches for wear.

At the Louisville show, competition was held for the top three finalists in both the college and high school divisions. Engineers from Ogura were on hand to grade the contestants' answers and to verify their adjustments. All contestants did extremely well.

At EXPO 2004 Customers Praise Ogura's Improved PTO Clutch/Brakes

Louisville, Kentucky

At the end of September, the annual lawn and garden expo was held at Louisville Kentucky. At the show this year, many end users stopped by the Ogura booth just to say thank you for making the performance improvements to the PTO clutch/brakes. These performance improvements, along with Ogura's consistent quality, are allowing the end users to notice a difference in both their "up time" and maintenance cost.

As the Ogura name becomes more and more synonymous with both quality and performance, original equipment manufacturers are also promoting that their equipment now uses Ogura clutches and brakes.

One new product at the Louisville show this year was the Spider mower, which heavily promoted the fact that their product utilizes Ogura's quality PTO clutch/brakes.



The Ogura Show crew ready for action



Spider mower at inside booth, highlighting the Ogura clutch



Spider at outside booth, with Ogura sign