

# OGURA



VOLUME 22  
FIRST QUARTER • 2005

## OGURA INDUSTRIAL CORPORATION UNVEILS NEW WEBSITE



New Website Homepage



Industrial Product Categories

### INDUSTRIAL SECTION

Product categories have been added and are color coded so all alike products are grouped together under the same color to focus selection options. Each product category now shows a picture of the part and contains a brief product summary as well as the basic torque range. Clicking on the title or the picture will bring the visitor to a more detailed page calling out the features of the clutch or brake. A new general table shows dimensional information and each part number has a specific PDF file for exact dimensional information. DXF files still remain, but new pictures have been added for each of the parts to help the site visitor see additional detail that may not be available from viewing either the PDF or the DXF file.

### MOBILE PRODUCTS

Like the Industrial section, the Mobile products have been redesigned for faster navigation. Individual PDF files for all Mobile, general purpose, and PTO clutches have also been added. DXF files are still present, but new pictures help to show additional detail for all Mobile products.

Another feature that helps site visitors to select a mobile product quickly, is that many of the dimensional columns in the product data section can be sorted by simply clicking on the column heading. To help speed Ogura engineering application review, a new on-line application data form has been created. In addition, 20 new part numbers have been added to the mobile, general purpose, and PTO clutch/brake sections.

Continued next page

Somerset, New Jersey

For the past year, OIC has been working on a new database driven website, which by the time of the printing of this newsletter will have already replaced the older HTML site. All changes to the site allow for easier selection and faster loading of information. The highlights of the new site.

### NEW HOMEPAGE

The page has been redesigned so that all information regarding applications, products and troubleshooting are located on a drop down menu on the left hand side. This menu remains throughout any page visited which gives a one click return to any part of the website.

## OIC EMPLOYEE PROFILE

### Mamiko Solomon Administrative Assistant

**H**ello, my name is Mamiko Solomon. I recently joined OIC as an administrative assistant. My main job functions are preparing various types of financial reports for Ogura in Japan and Kanematsu, translating documents from English to Japanese, and vice versa, as well as organizing drawings from Japan. I was born and raised in Kamakura, Japan which is a famous historical town located close to the ocean.



Mamiko Solomon

I graduated from College of Saint Elizabeth in Morristown, NJ with B.S. Accounting degree. I previously worked in the accounting department of a freight forwarding company, and later was transferred to NY office as a sales assistant. However, as I missed New Jersey so much, I returned here and worked in Sales and MIS for a shipping company. Now, here I am. This is the first experience for me to work for manufacturing company, and I have started to learn about this new field.

When I am not working, I love drawing, cooking, doing various type of art crafts, watching movies, listening to all kinds of music and exercising, such as jogging, hiking and rollerblading. I am really excited to be a part of the Ogura team, and look forward to working with all of you!

## New Website Cont.

### GENERAL SECTIONS

Copies of all quarterly newsletters and all editorials since 1999 are listed on the site. In the technical section, the conversion calculator's response is now instantaneous. As soon as a number is typed in, the conversion is calculated.

The new site has been online since February 2005. Additional pictures are still being added. If there are additional changes you would like to see on the Ogura site, please contact Nancy Kelly at [nkelly@ogura-clutch.com](mailto:nkelly@ogura-clutch.com).



Model	Ratio	Max. Torque (kg-m)	Max. Speed (rpm)	Weight (kg)	Price (USD)
OG-100	1:1	100	1500	10	1000
OG-150	1:1	150	1500	15	1500
OG-200	1:1	200	1500	20	2000
OG-250	1:1	250	1500	25	2500
OG-300	1:1	300	1500	30	3000
OG-350	1:1	350	1500	35	3500
OG-400	1:1	400	1500	40	4000
OG-450	1:1	450	1500	45	4500
OG-500	1:1	500	1500	50	5000
OG-550	1:1	550	1500	55	5500
OG-600	1:1	600	1500	60	6000
OG-650	1:1	650	1500	65	6500
OG-700	1:1	700	1500	70	7000
OG-750	1:1	750	1500	75	7500
OG-800	1:1	800	1500	80	8000
OG-850	1:1	850	1500	85	8500
OG-900	1:1	900	1500	90	9000
OG-950	1:1	950	1500	95	9500
OG-1000	1:1	1000	1500	100	10000

Product Data Table

## Ogura Production Continues to Grow Green and to Save Green

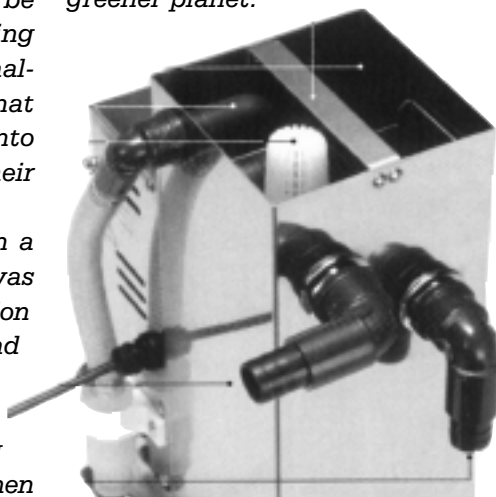
### Koubayashi, Japan

**T**he Koubayashi manufacturing facility produces about 25,000 liters of waste oil per month. Disposal of this waste oil costs about \$60,000 a year. Since 85% of the waste oil is cutting fluid, Production felt that a significant amount of that could be reclaimed. Although reclaiming cutting oil is not new, the challenge for Ogura was the fact that all factory oils were placed into one container regardless of their type.

A solution was found with a new type of cutting fluid that was easier to separate. Production switched to this new fluid and also used a new machine that sits on top of the waste oil and removes all oil but the cutting fluid. The cutting fluid can then go through a series of

filters and magnetic chip removers to be clean enough to be reused.

The net result of waste oil disposal savings and cutting oil reuse will save \$65,000 per year but, more importantly, will put less potential pollutants in the environment and help make for a greener planet.



Oil Skimmer



## APPLICATION STORY

# Idle Trucks Are The Devil's Workshop

**D**id you know that an idling heavy duty truck (like an 18 wheeler) can consume over \$1,000 worth of fuel per month? Very often at truck stops all across America, they idle. They idle while the driver sleeps (so he can keep warm or cool). They idle so he can watch American Idol, keep a beer cold or listen to the Charlie Daniels band.

**"The accessory . . . incorporates an Ogura electric clutch which is belt driven from the reefer's diesel engine."**

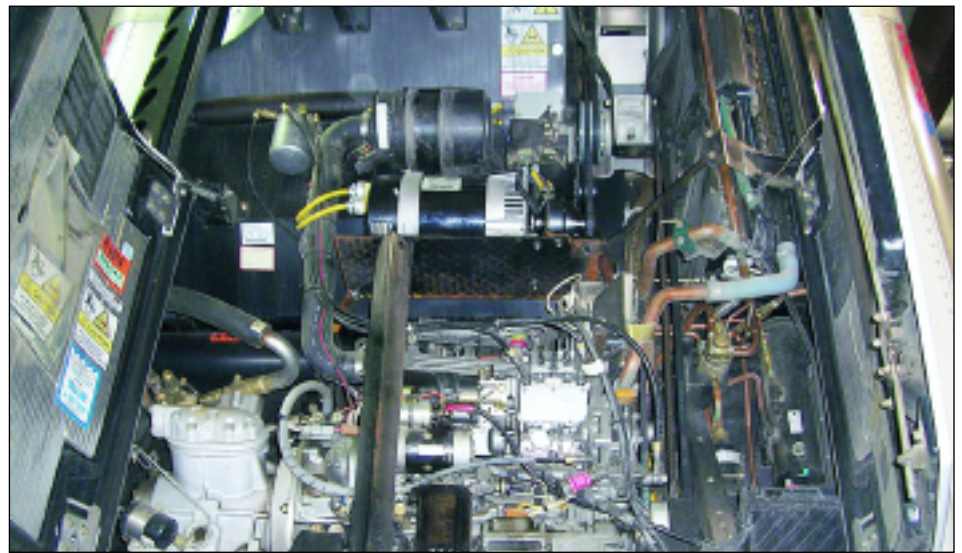
Besides the fuel wasted, there's lots of pollution from the big diesel's exhaust.

What to do? There are several ideas out there, but one of the best now gearing up for production is a device designed by RJM trucking. Randy McCombs, the company President, explains it this way:

Many over-road Class 8 trucks (18 Wheelers) carry "reefers". These are separate diesel engine powered refrigeration units mounted on the front/top of their trailers to keep foodstuff or beverages (beer) cold during transportation. RJM figured that these reefers already have the additional power plants needed to handle the small driver comfort loads. You see, if you just need to keep the driver comfortable, you don't need to have that big diesel running at idle all the time! His idea was to use the separate diesel powered reefer unit as the alternative power source. He designed a clutched AC generator accessory to attach to existing



**RJM AC Generator with Ogura Clutch**



**Clutch Generator System Installed in Reefer**

Carrier and Thermo King power reefer units. The accessory (shown here) incorporates an Ogura electric clutch which is belt driven from the reefer's diesel engine. When the big rig is stopping for the night and power is needed, it automatically switches on the electric clutch and AC generator, which draws very little additional power from the smaller reefer engine. Also Mr. McCombs points out that the reefers fuel is 48 cents per gallon less expensive than the big engines!

The device is coupled to a control box that will sense the conditions of the engine and ignition system to make sure the conditions are just right to deliver heat, TV or a cold beer to our overland trucker.

This box switches the Ogura clutch on and off as needed. When the truck engine is running, the clutch is powered down and there is no additional load on the reefer unit.

Key to the system is Ogura's 515609 Mobile 12 VDC, high torque clutch. With its double pole, quad flux design and flexible mounting hub configuration, it is the perfect



**Beta Test Platform**

fit for RJM's custom pulley and the one inch AC generators input shaft.

These devices are in Beta testing on trucks across America's roads right now and scheduled for mass production soon. So far, with many tens of thousands of miles logged in, there have been no problems. Once RJM Trucking is satisfied that the devices will hold up for many hundreds of thousands of miles, that baby is going to hit the road in full production.

Ogura and RJM Trucking are doing our part to keep the air clean and to keep the devil out of business.



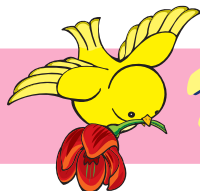
## OGURA INDUSTRIAL CORPORATION

P.O. Box 5790, 100 Randolph Road, Somerset, NJ 08875-5790

Tel: 732-271-7361 • Fax: 732-271-7580

E-mail: [oguranj@ogura-clutch.com](mailto:oguranj@ogura-clutch.com)

Web Site: [www.ogura-clutch.com](http://www.ogura-clutch.com)



# Happy Spring

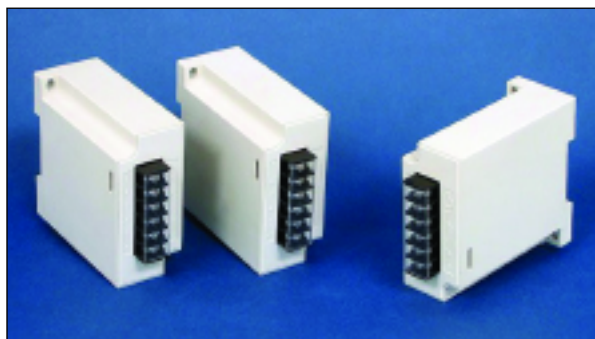
from the staff of

## Ogura Industrial

### NEW PRODUCT RELEASE

## New DIN Mounted Power Supply

Ogura has just introduced their DIN mounted power supplies. The model OPR109 and OFS120 are both made to accept a DIN rail mount. This new design makes mounting a snap. The slim profile and plastic housing make for a light weight compact supply. The new units also contain internal semi conductors so there is no longer need for an intermediate



DIN Mounted Power Supply

relay. A PLC can control the clutch and brake functions directly. The 109 control is a standard power supply with a 100 – 120 volt input and 90 volt output. OFS120 control is made for over excitation and takes a 180 – 220 volt input to produce a 90 volt output.

Both these controls replace their larger and more expensive predecessors.

### OGURA IN THE NEWS

## Ogura Received Excellence in Supply

From Matsushita

At the end of 2004, all air conditioning production facilities, including the new operation in China, received the Excellence in Supply award from Matsushita and Wanbao. This award honors suppliers that have achieved Matsushita's level of quality and performance. This award was extremely difficult to achieve in 2004 because of the steel shortages, but by working with suppliers, Ogura was able

to maintain a continuous supply of product and achieve this honor.



Excellence Award Ceremony

**Auto./Position Clutch/Brake Experts**

From the world's largest manufacturer of world-class electromagnetic clutches and brakes

Electromagnetic clutches and brakes for virtually every application

- Production capacity over 30 million/year
- ISO/TS16949 certified
- Clutches for both mobile and industrial applications
- Custom designs available in all size ranges to meet your needs

Visit our web site at: <http://ogura-clutch.com> for more information and request a FREE CD-ROM catalog

**OGURA INDUSTRIAL CORP.**

100 Randolph Road • Somerset, NJ 08873  
Phone: 732-271-7361 • Fax: 732-271-7580  
Website: <http://ogura-clutch.com>  
Email: [info@ogura-clutch.com](mailto:info@ogura-clutch.com)

**New Ad for Machine Design and Design News**