



Electromagnetic  
**Mobile Clutches**  
for Pumps and Compressors



**OGURA**  
INDUSTRIAL CORP.

"What You Need in a Clutch®"

# Mobile Clutches

Ogura Provides  
**Innovative Solutions**  
that Meet your Challenges

## **Ogura mobile electric clutches**

Ogura mobile electric clutches provide reliable performance in applications where long life and no maintenance is critical. These clutches were primarily designed as air conditioning compressor clutches, but now are also used as clutches for hydraulic pumps (clutch pump), high pressure piston pumps, vacuum pumps and centrifugal pumps. The units that are used to clutch hydraulic pumps and to clutch water pumps are typically used for tow trucks, marine winch drives, and boom trucks in the utilities industry.

*Ogura mobile clutches are flange mounted, normally a two piece construction. These clutches are typically mounted directly on the pumps.*



Auto Air Conditioning Compressors



Air Compressor and Vacuum Pumps



Water Pumps



Hydraulic Pumps

Pumps handling liquid are typically driven by our clutches from a gas engine on such equipment as water jetters, pressure washers, street sweepers and carpet cleaning trucks. Pump clutches are often used on vacuum pumps and compressor applications such as refrigeration and waste removal trucks as well as mobile service trucks, or "under hood" applications where the clutch engages an air compressor mounted in the engine compartment of a service truck.

Ogura mobile clutches range in size from 58 to 1500 lbs-ft and feature numerous pulley configurations including v-belt and poly-v as well as universal hub mounts. The user can choose from a straight, splined or tapered bore to match the corresponding pump shaft. Many of our older pump and compressor clutch configurations are interchangeable with competitor models.

For detailed specifications for the entire Mo



# Robust, reliable performance for long life applications



## Put the **Ogura Design Advantage** to Work for You

### **Solid forged rotor**

A one piece solid forged rotor means no chance of internal parts separation. Our rotors also have an even wall thickness around the coil which gives optimum flux distribution, maximizing torque.

### **Different coil voltages available**

Although 12 volts is the most common, 24 volts can also be made available. Depending upon the quantity, other specialty voltages can be made.

### **High temperature, longer life grease**

All models include our special long life grease which has shown a significant improvement in life over other standard high temp greases.

### **E-coating**

Where possible, all parts in the clutch are e-coated to give maximum corrosion protection.

### **High temperature epoxy coil**

To help prevent failure from both vibration and outside contaminants, all coils are sealed in the coil shell with a high temperature epoxy coating.

### **Forged machined pulley**

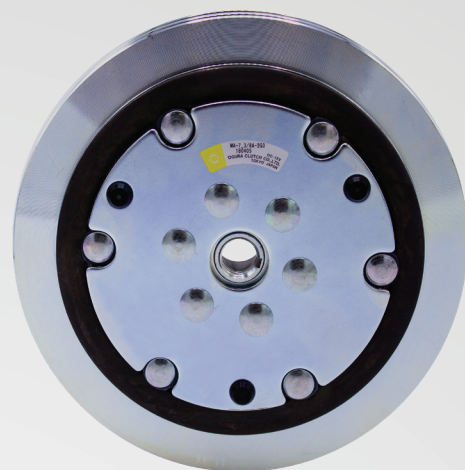
All models in this section use a heavy duty machined pulley. A stronger pulley resists damage due to abusive environments.

### **Bi-directional**

Higher torque units are bi-directional. Lower torque units need to have direction of rotation noted.

### **Soft-start control option**

An optional electric soft start control can be added to produce a softer engagement.



### **GENERAL SPECIFICATIONS**

Static Torque Range	58 -1500 lb-ft
Voltage	12 / 24
Input	V belt, Hub (U-joint)
Bore	Straight, Taper, Spline
Weight	7 - 176 lbs

# Other solutions available from Ogura



**1 Power off brakes**  
to hold or stop in the  
absence of electrical  
power



1

**2 Multiple disc  
and tooth  
clutches**  
high torque,  
can run either  
dry or in oil



4

**4 Mobile equipment clutches**  
for use with gas and diesel  
engines on outdoor power  
equipment and engine driven  
components



2



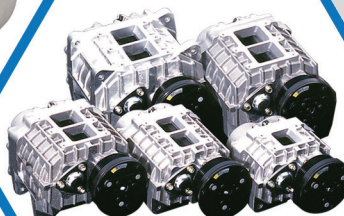
6

**3 Industrial  
clutches / brakes**  
single face  
quick response,  
high cycle



3

**5 Superchargers**  
for increased  
engine  
performance  
and reduced fuel  
consumption



5

**6 Tension control**  
hysteresis and magnetic  
particle for precise torque  
control

## Ogura has over 7,000 Standard and Custom Electromagnetic Clutch and Brake Designs.

Founded in 1938, Ogura has over 80 years' experience in the manufacture and design of clutches and brakes. Ogura is currently the world's largest manufacturer of electromagnetic clutches and brakes producing around 30 million units per year with over 7,000 standard and custom designs available from 14 manufacturing ISO certified facilities throughout the world.

Visit [www.ogura-clutch.com](http://www.ogura-clutch.com) to learn more.

Visit our YouTube channel for an extensive library of installation, maintenance, and how-they-work animated videos



<https://www.youtube.com/user/oguraindustrial>



"What You Need in a Clutch®"

100 Randolph Road • Somerset, NJ 08875-5790 • Tel: (732) 271-7361

[www.ogura-clutch.com](http://www.ogura-clutch.com)